

A FOLDING SPUDDER FOR TREE PLANTING

E. J. Whalen

District Forester, New York State Conservation Department
Jamestown, New York

Although at the present time much tree planting in New York is done by machines that do the complete job, a large amount is still done by hand. For a number of years now, "spudders" mounted onto the rear wheels of rubber-tired tractors have been employed in the western districts of New York as an aid to digging the holes for such hand planting. These devices mechanize the process of hole digging and result in a more uniform job, especially when inexperienced labor is employed. They reduce costs and speed the planting of the seedlings and therefore improve the quality of the job

One of the principal difficulties encountered in the use of spudders has been that of moving from one planting site to another. Ordinarily when crossing or travelling along a road or loading the tractor on a truck, it is necessary to remove the spudders from the wheels. A great deal of time is lost in this operation, especially in realignment of bolt holes at the new site. This problem can be solved by, making the spudder so that the digging points can be folded back out of the way. The following pictures show how we accomplish this.

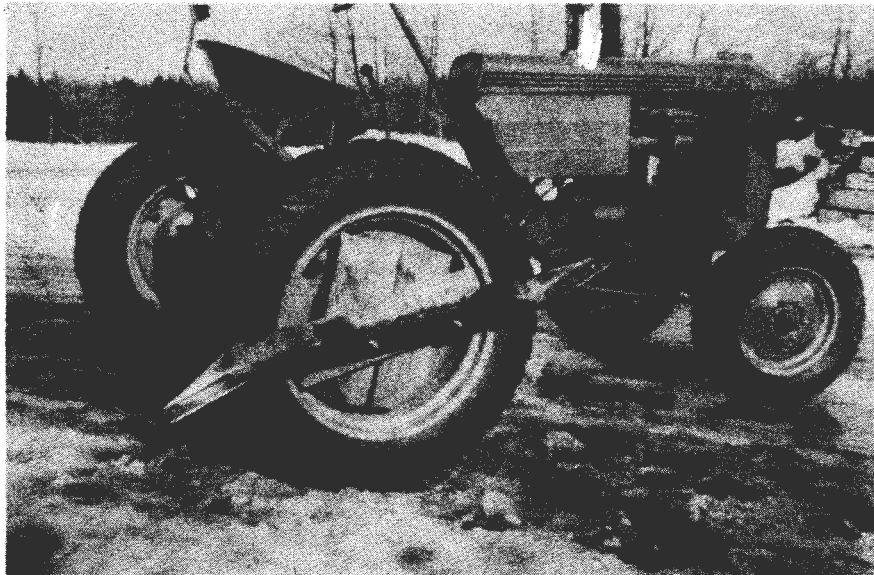


Figure 1. Spudder mounted on the wheel of a Case tractor. In planting, there is a spudder for the other wheel also. Spacing between rows is varied by changing distance between wheels (5 - 7 feet). Spacing in row is varied by planting every hole or every other hole (5- 10 feet) Combinations of 5 x 5, 5 x 10, 7 x 5 and 7 x 10 are possible.

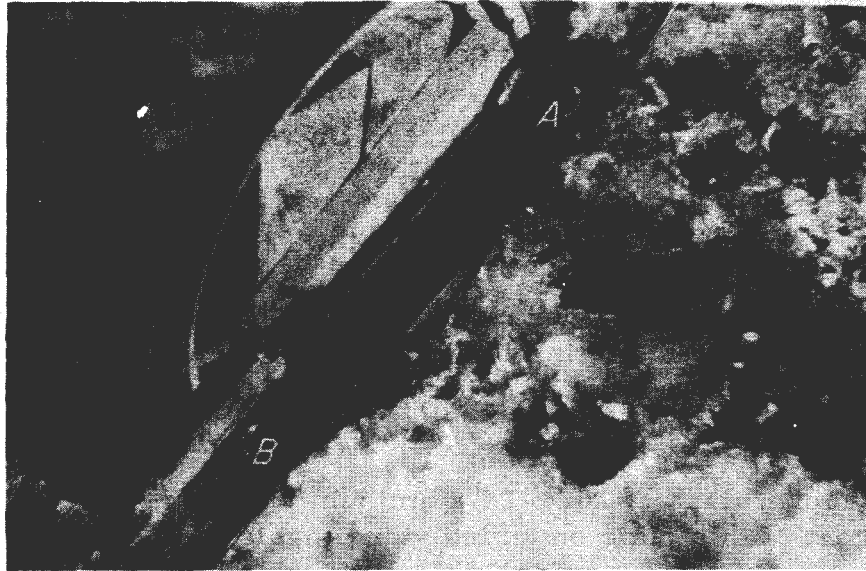


Figure 2. Close-up to show hinge and bolts that hold digger points in place. To fold, remove bolts A and B.

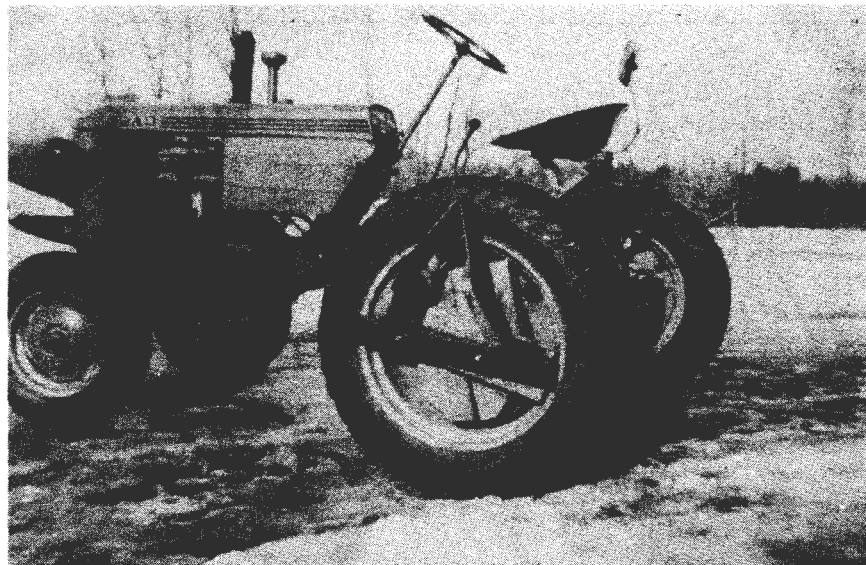


Figure 3. Folded spudder. Ends are held together by small bolt through the tips. Tractor can be easily moved over road or loaded on a truck without removing spudders from wheels.