

SEEDLING HARVESTER

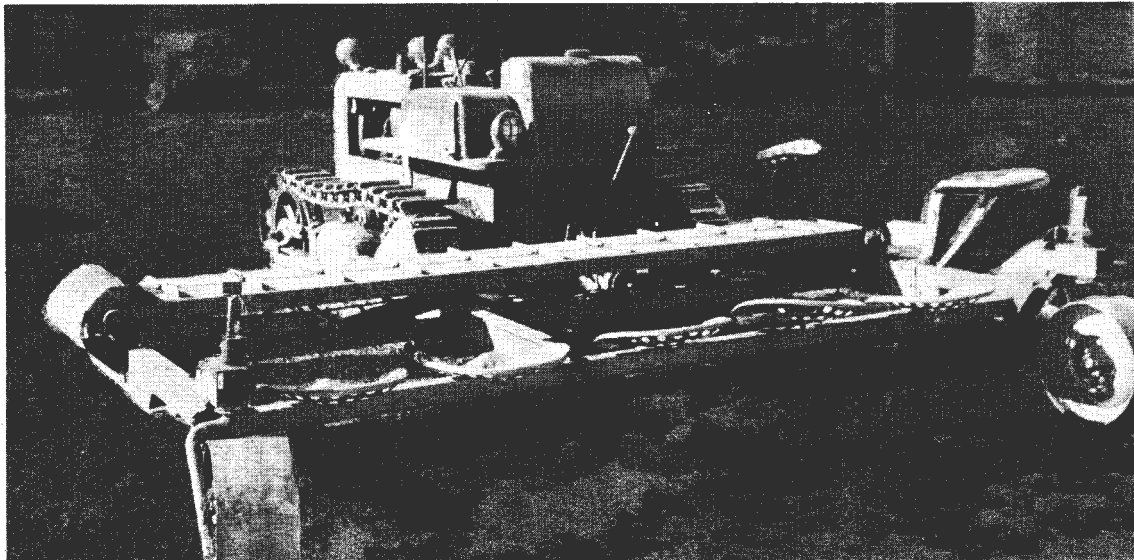
Karl B. Lanquist

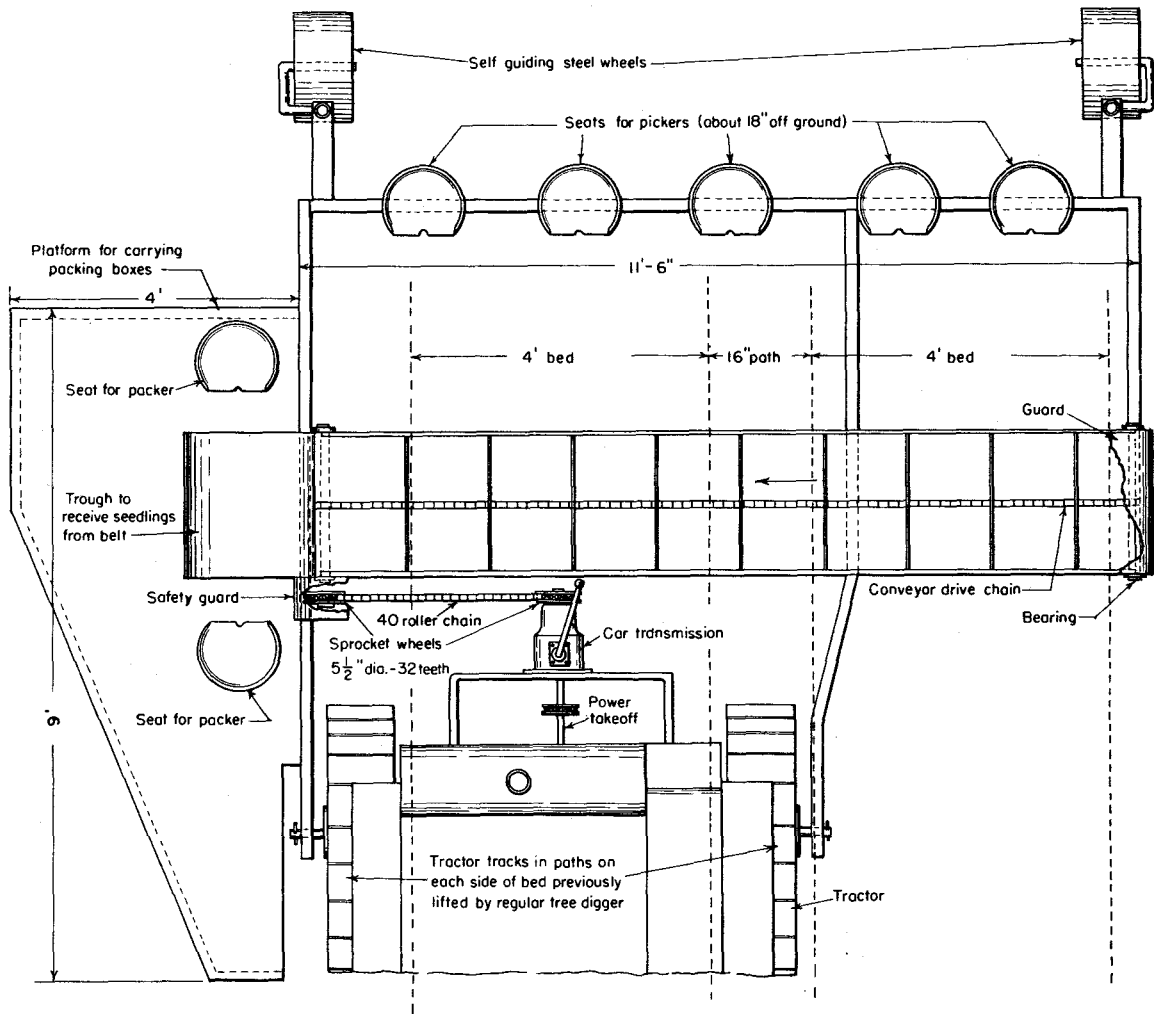
Nurseryman, Mt. Shasta Nursery, U. S. Forest Service Mc Cloud,  
California

To speed tree digging at Shasta Nursery, we have developed the machine shown below.- After digging two adjacent beds in the usual manner, the harvester passes over them and the trees are pulled by a crew of 4 or 5 pickers and 1 or 2 packer-trimmers riding on the machine. The pickers pull the seedlings, grade them, count them (25 or 50 to the bunch) and place them on the conveyor belt which carries them to the packers. The packers take them from the trough into which they fall from the belt, prune the roots, tie the bunch and put it into a box for removal periodically to the packing shed or heeling in beds.

The harvester can be adapted to almost any condition--to large--or small-scale operations. It has been used successfully on 5 beds at a time with 2 pickers assigned to each bed walking behind the machine, and the same crew of packers. When the machine is used in this way, the seats are unnecessary. Obviously the Harvester would be lighter, more maneuverable, and somewhat less expensive to manufacture if it did not provide for carrying the pickers.

The "Seedling Harvester" has greatly improved the quality and quantity of production at this nursery.





**SEEDLING HARVESTER**  
 DESIGNED BY FLOYD BEALL AND KARL B. LANDQUIST  
 MT. SHASTA NURSERY  
 U.S. FOREST SERVICE

Drawn U.S.F.S., W.O. 1953