

TOWNER HYDRAULIC LADDER

John Alpar, Nurseryman
Towner Nursery
Towner, N. Dak.

Anyone assigned the task of picking tree seed from standing trees must decide whether to climb the trees or acquire equipment to elevate the picker into the tree crowns. Climbing demands skill, courage, and agility. Such attributes are seldom combined with the patience to methodically pick seed. Elevating equipment is usually expensive and often lacks maneuverability.

Nearly every nursery has a small tractor equipped with a three-point hitch and front end loader. Figures 1 and 2 show a hydraulic ladder that costs very little to construct and is exceedingly maneuverable. The metal extension ladder can be purchased in any hardware store, as can the pipes and strap iron necessary for the prefabrication of the front and rear apparatuses (fig. 3). The unit is a prototype that definitely can be refined.

The ladder is transported in the horizontal telescoped position. When it is to be used to ascend a tree, the ladder is extended, the safety lock is fastened, the ladder is raised to the estimated desired height, and the tractor is carefully jockeyed into position so the top of the ladder rests against a portion of the tree. The brakes of the tractor can then be set, the motor turned off, and the ladder ascended. Safety belts should be used while one is in the tree.

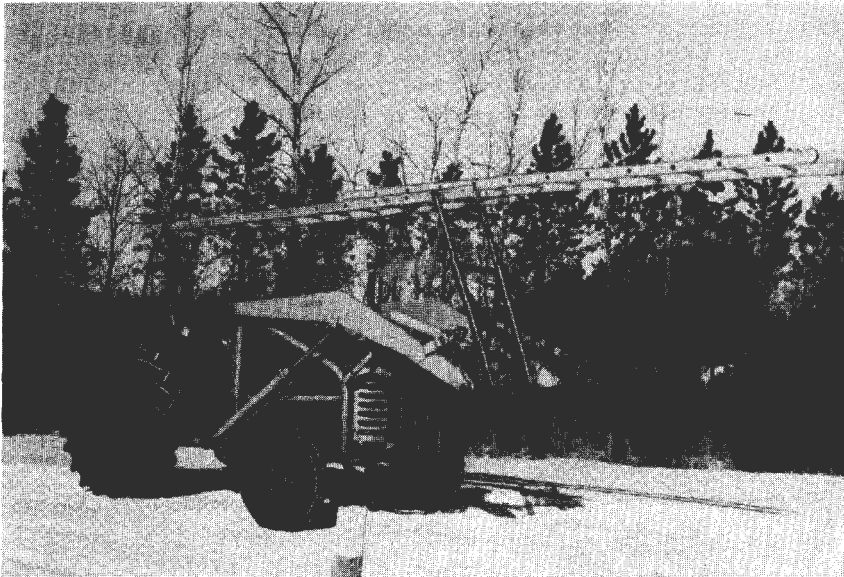


Figure 1



Figure 2

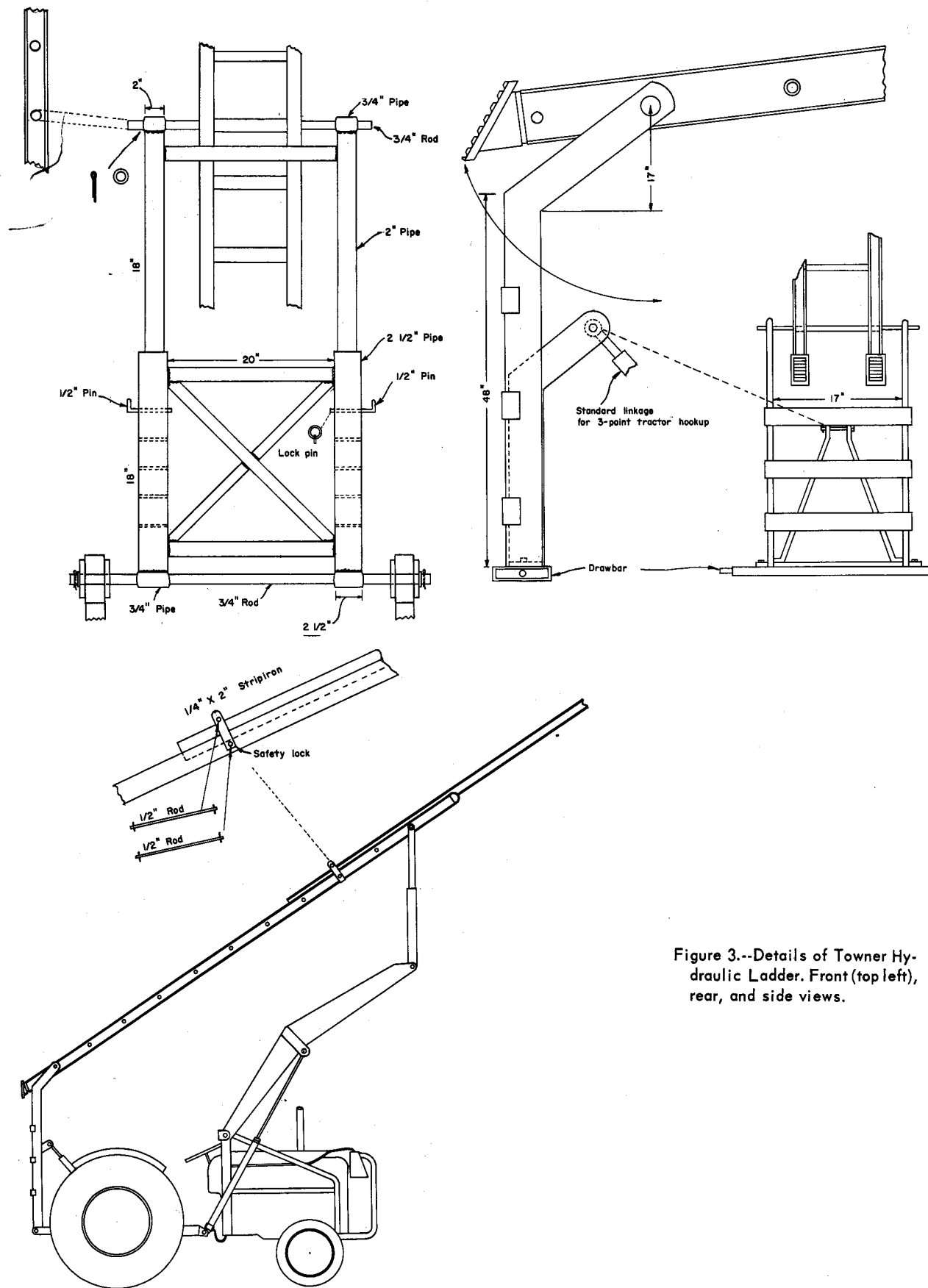


Figure 3.--Details of Towner Hydraulic Ladder. Front (top left), rear, and side views.