

A compact disk with all the following journal articles or publications in Adobe PDF format can be ordered using the Literature Order Form on the last page of this section. Note the 2 restrictions:

1. **Copyrighted Material.** Items with © are copyrighted and require a fee for each copy, so we will only send you the title page and abstract. If you want the entire article, you can order copies on-line or from a library service.
2. **Special Orders (SO).** Special orders are books or other publications that, because of their size or cost, require special handling. For some, the Forest Service has procured copies for free distribution, but others will have to be purchased. Prices and ordering instructions are given following each listing in the New Nursery Literature section.



## The Container Tree Nursery Manual series is now available in Spanish.

The funding for the translation and printing was provided by the Comision Nacional Forestal, Secretaria de Medio Ambiente y Recursos Naturales, and I would like to acknowledge the dedication and persistence of Rafael Alvarez Reyes in seeing this project through. The translations were done by: Dante A. Rodriguez Trejo, J. Ricardo Sanchez Velazquez, Rebeca Aldana Barajas, and Mauricio Mendoza

Briseno. Working through his nonprofit organization Reverdece, Pedro Hernandez Provenzal was invaluable in facilitating this project and deserves a special thank you.

Pedro has also agreed to handle requests so you can contact him at the following E-mail address: [mexicopedro@hotmail.com](mailto:mexicopedro@hotmail.com)

*Tropical Nursery Manual also still available—see page 46.*

## Bareroot Production



- 1. Forest seedling nursery practices in the southern United States: bareroot nurseries.** Starkey, T. E., Enebak, S. A., and South, D. B. *Tree Planters' Notes* 58(1):4-17. 2015.
- 2. Measuring irrigation uniformity in bareroot nurseries: a case study.** Overton, R. P. *Tree Planters' Notes* 57(2):23-31. 2014.

## Business Management



- 3. Drugs and alcohol in the workplace.** Kane, S. *International Plant Propagators' Society, combined proceedings 2013*, 63:81-82. 2014.
- 4. Incentive driven tasks at Prides Corner Farms.** Emmons, M. *International Plant Propagators' Society, combined proceedings 2013*, 63:245-248. 2014.

## Container Production



- 5. © Comparing flowering responses of long-day plants under incandescent and two commercial light-emitting diode lamps.** Kohyama, F., Whitman, C., and Runkle, E. S. *HortTechnology* 24(4):490-495. 2014.
- 6. © Comparison of supplemental lighting from high-pressure sodium lamps and light-emitting diodes during bedding plant seedling production.** Randall, W. C. and Lopez, R. G. *HortScience* 49(5):589-595. 2014.

**7. © Evaluation of biopolymer-coated fiber containers for container-grown plants.** McCabe, K. G., Schrader, J. A., Madbouly, S., Grewell, D., and Graves, W. R. *HortTechnology* 24(4):439-448. 2014.

**8. Fertilizer movement in nursery containers: what happens during irrigation.** Hoskins, T. C., Owen, J. S., Jr., Fields, J. S., and Brindley, J. *International Plant Propagators' Society, combined proceedings 2013*, 63:423-426. 2014.

**9. Forest seedling nursery practices in the southern United States: container nurseries.** Starkey, T. E., Enebak, S. A., and South, D. B. *Tree Planters' Notes* 58(1):18-26. 2015.

**10. © Irrigation frequency during container production alters *Rhododendron* growth, nutrient uptake, and flowering after transplanting into a landscape.** Scagel, C. F., Bi, G., Bryla, D. R., Fuchigami, L. H., and Regan, R. P. *HortScience* 49(7):955-960. 2014.

**11. Review of root manipulation in containers.** Cooley, J. *International Plant Propagators' Society, combined proceedings 2013*, 63:169-174. 2014.

**12. Root performance... doing more, with less.** Willis, D. *International Plant Propagators' Society, combined proceedings 2014*, 63:307-310. 2014.

**13. © Using movable light-emitting diodes for electricity savings in a plant factory growing lettuce.** Li, K., Yang, Q.-C., Tong, Y.-X., and Cheng, R. *HortTechnology* 24(5):546-553. 2014.

**14. © Using container weights to determine irrigation needs: a simple method.** Dumroese, R. K., Montville, M. E., and Pinto, J. R. *Native Plants Journal* 16(1):67-71. 2015.

## Diverse Species



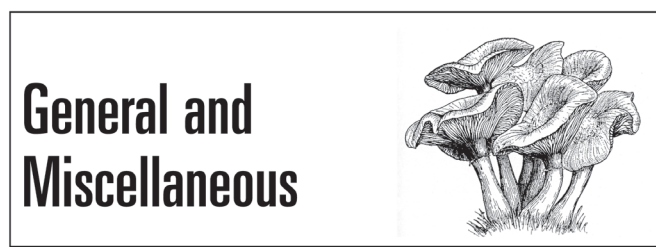
**15. © Best management practices: an integrated and collaborative approach to native plant restoration on highly disturbed sites.** Riley, L. E., Steinfeld, D. E., Winn, L. A., and Lucas, S. L. *Natural Area Journal* 35(1):45-53. 2015.

16. © **Conservation projects in prison: the case for engaging incarcerated populations in conservation and science.** Kaye, T. M., Bush, K., Naugle, C., and LeRoy, C. J. *Natural Area Journal* 35(1):90-97. 2015.
17. **Cutting propagation of little-leaf mountain mahogany.** Rupp, L. A. *International Plant Propagators' Society, combined proceedings 2013*, 63:209. 2014.
18. © **Does smoke promote seed germination in 10 interior west *Penstemon* species?** Fornwalt, P. J. *Native Plants Journal* 16(1):5-12. 2015.
19. © **Genebanking seeds from natural populations.** Walters, C. *Natural Area Journal* 35(1):98-105. 2015.
20. **Growing native azaleas from seed.** Jackson, J. P. and Johnson, L. *International Plant Propagators' Society, combined proceedings 2013*, 63:441-442. 2014.
21. © **Growing native seeds for restoration: seed dormancy and germination of *Sidalcea malviflora* ssp. *virgata* (Malvaceae).** Jones, K. D. and Kaye, T. N. *Natural Area Journal* 35(1):26-28. 2015.
22. © **Native plants provide equal or better nutrition than crop plants in wildlife plantings.** Applegate, R. D. *Native Plants Journal* 16(1):29-36. 2015.
23. **Northwest Oregon Restoration Partnership: a model for successful watershed restoration.** Heckeroth, K. *Tree Planters' Notes* 57(1):61-71. 2014.
24. **Options for successful establishment of native species.** van Dorsser, J. *Acta Horticulturae* 1055:73-74. 2014.
25. © **Producing native plant materials for restoration: 10 rules to collect and maintain genetic diversity.** Basey, A. C., Fant, J. B., and Kramer, A. T. *Native Plants Journal* 16(1):37-53. 2015.
26. **Propagation and reintroduction of two rare plant species in the south-eastern United States of America.** LeCompte, J. S. *International Plant Propagators' Society, combined proceedings 2013*, 63:121-124. 2014.
27. © **Revegetating disturbance in National Parks: reestablishing native plants in Saguaro National Park, Sonoran Desert.** Abella, S. R., O'Brien, K. L., and Weesner, M. W. *Natural Area Journal* 35(1):18-25. 2015.
28. © **Seed production and field establishment of hoary tansyaster (*Machaeranthera canescens*).** Tilley, D. J. *Native Plants Journal* 16(1):61-66. 2015.
29. © **Seed sourcing for restoration in an era of climate change.** Havens, K., Vitt, P., Still, S., and Kramer, A. T. *Natural Area Journal* 35(1):122-133. 2015.
30. © **Seeds of success: a national seed banking program working to achieve long-term conservation goals.** Haidet, M. *Natural Area Journal* 35(1):165-173. 2015.
31. **Softwood cutting propagation of northeast United States native shrub species.** Lubell, J. D. *International Plant Propagators' Society, combined proceedings 2013*, 63:275-276. 2014.
32. © **Stratification and light promote germination of ratroot (*Acorus americanus* (Raf.) Raf. [Acoraceae]) seeds harvested in northeastern Alberta.** Smreciu, A., Gould, K., and Wood, S. *Native Plants Journal* 16(1):19-22. 2015.



33. © **Biochar media addition impacts apple rootstock growth and nutrition.** Street, T. A., Doyle, R. B., and Close, D. C. *HortScience* 49(9):1188-1193. 2014.
34. © **Controlled-release fertilizer application rates for container nursery crop production in southwestern Ontario, Canada.** Agro, E. and Zheng, Y. *HortScience* 49(11):1414-1423. 2014.
35. © **Controlled-release fertilizer placement affects the leaching pattern of nutrients from nursery containers during irrigation.** Hoskins, T. C., Owen, J. S., Jr., and Niemiera, A. X. *HortScience* 49(10):1341-1345. 2014.
36. **Effects of foliar urea fertilization on nitrogen status of containerized 2+0 black spruce seedlings produced in forest nurseries.** Gagnon, J. and DeBlois, J. *Tree Planters' Notes* 57(2):53-61. 2014.
37. © **Effects of municipal solid waste compost on soil properties and vegetables growth.** Giannakis, G. V., Kourgiyalas, N. N., Paranychianakis, N. V., Nikolaidis, N. P., and Kalogerakis, N. *Compost Science and Utilization* 22:116-131. 2014.

38. © **Exponential fertilization and plant competition effects on the growth and N nutrition of trembling aspen and white spruce seedlings.** Hu, Y.-L., Hu, Y., Zeng, D.-H., Tan, X., and Chang, S. X. *Canadian Journal of Forest Research* 45:78-86. 2015.
39. **Fertilisation strategies in organic ornamental plants.** Koller, M., Koch, R., and Degen, B. *Acta Horticulturae* 1041:47-52. 2014.
40. © **Liquid corn and fish fertilizers are good options for fertigation in blackberry cultivars grown in an organic production system.** Fernandez-Salvador, J., Strik, B. C., and Bryla, D. R. *HortScience* 50(2):225-233. 2015.
41. © **Organic nitrogen.** Schmidt, S., Nasholm, T., and Rentsch, D. *New Phytologist* 203:29-31. 2014.
42. © **Prediction of controlled-release fertilizer nitrogen release using the pouch field and accelerated temperature-controlled incubation methods in sand soils.** Carson, L. C., Ozores-Hampton, M., Morgan, K. T., and Sartain, J. B. *HortScience* 49(12):1575-1581. 2014.
43. © **Seedling response of *Nothofagus* species to N and P: linking plant architecture to N/P ratio and resorption proficiency.** Aguero, M. L., Puntieri, J., Mazzarino, M. J., Grosfeld, J., and Barroetavena, C. *Trees* 28:1185-1195. 2014.
44. © **Validation of a fertilizer potential acidity model to predict the effects of water-soluble fertilizer on substrate pH.** Fisher, P. R., Argo, W. R., and Biernbaum, J. A. *HortScience* 49(8):1061-1066. 2014.
45. © **Vermicompost leachate reduces temperature and water stress effects in tomato seedlings.** Chinsamy, M., Kulkarni, M. G., and Van Staden, J. *HortScience* 49(9):1183-1187. 2014.
47. © **Contemporary forest restoration: a review emphasizing function.** Stanturf, J. A., Palik, B. J., and Dumroese, R. K. *Forest Ecology and Management* 331:292-323. 2014.
48. **Forest nursery seedling production in the United States - fiscal year 2013.** Harper, R. A., Hernandez, G., Arseneault, J., and Woodruff, K. J. *Tree Planters' Notes* 57(2):62-66. 2014.
49. **Forestry and tree planting in Michigan.** Mergener, R., Botti, W., and Heyd, R. *Tree Planters' Notes* 57(1):13-20. 2014.
50. **Forestry and tree planting in New Mexico.** Burney, O. T., Brown, S. H., Bentson, K. P., and Hacker, W. D. *Tree Planters' Notes* 57(1):4-12. 2014.
51. **The forests of the First State (Delaware).** Topper, S. L. *Tree Planters' Notes* 57(2):4-10. 2014.
52. © **It is what it is, but it shouldn't be: the science of ambiguity.** Marler, T. E. and Terral, O. *HortScience* 49(9):1234-1236. 2014.
53. © **Pesticides linked to bird declines.** Goulson, D. *Nature* 13642. 2015.
54. © **Plant a tree, save the planet?** Bragg, D.C. *Journal of Forestry* 113(1):5-6. 2015.
55. **Teaching plant propagation online.** Regan, R. P. *International Plant Propagators' Society, combined proceedings 2013*, 63:155-158. 2014.



46. **Beyond cowboy science: simple methods for conducting credible and valid research.** Haase, D. L. *Tree Planters' Notes* 57(2):32-43. 2014.



56. **Assisted migration: what it means to nursery managers and tree planters.** Williams, M. I. and Dumroese, R. K. *Tree Planters' Notes* 57(1):21-26. 2014.

57. © **Comparative genetic responses to climate in the varieties of *Pinus ponderosa* and *Pseudotsuga menziesii*: reforestation.** Rehfeldt, G. E., Jaquish, B. C., Saenz-Romero, C., and Joyce, D. G. *Forest Ecology and Management* 324:147-157. 2014.

58. © **Genetic considerations in ecosystem restoration using native tree species.** Thomas, E., Jalonen, R., Loo, J., and Boshier, D. *Forest Ecology and Management* 333:66-75. 2014.
59. **Genetic resource conservation of Table Mountain pine (*Pinus pungens*) in the central and southern Appalachian Mountains.** Jetton, R. M., Crane, B. S., Whittier, W. A., and Dvorak, W. S. *Tree Planters' Notes* 58(1):42-52. 2015.
60. © **Innovative approaches to the preservation of forest trees.** Pritchard, H. W., Moat, J. F., Ferraz, J. B. S., and Marks, T. R. *Forest Ecology and Management* 333:88-98. 2014.
61. **Quantifying safe seed transfer distance and impacts of tree breeding on adaptation.** O'Neill, G. A., Stoehr, M., and Jaquish, B. *Forest Ecology and Management* 328:122-130. 2014.
62. © **The role of forest genetic resources in responding to biotic and abiotic factors in the context of anthropogenic climate change.** Alfaro, R. I., Fady, B., Vendramin, G. G., Dawson, I. K., and Fleming, R. A. *Forest Ecology and Management* 333:76-87. 2014.
63. © **Stem damage of lodgepole pine clonal cuttings in relation to wood and fiber traits, acoustic velocity, and spiral grain.** Fries, A., Ulvcrone, T., Wu, H. X., and Kroon, J. *Scandinavian Journal of Forest Research* 29(8):764-776. 2014.
64. © **Agricultural uses of plant biostimulants.** Calvo, P., Nelson, L., and Kloepper, J. W. *Plant and Soil* 383:3-41. 2014.
65. © **Arbuscular mycorrhiza and nitrogen: implications for individual plants through to ecosystems.** Hodge, A. and Storer, K. *Plant and Soil* 386:1-19. 2015.
66. © **Cultured arbuscular mycorrhizal fungi and native soil inocula improve seedling development of two pioneer trees in the Andean region.** Urgiles, N., Straub, A., Lojan, P., and Schubler, A. *New Forests* 45:859-874. 2014.
67. © **Do ectomycorrhizas affect boron uptake in *Betula pendula*?** Ruuhola, T. and Lehto, T. *Canadian Journal of Forest Research* 44:1013-1019. 2014.
68. © **Infection with foliar pathogenic fungi does not alter the receptivity of Norway spruce seedlings to ectomycorrhizal fungi.** Velmala, S. M., Rajala, T., Smolander, A., and Petaisto, R.-L. *Plant and Soil* 385:329-342. 2014.
69. © **Influence of mycorrhizal inoculation on growth of micropropagated *Populus x canescens* lines in metal-contaminated soils.** Bojarczuk, K., Karlinski, L., Hazubska-Przybyl, T., and Kieliszewska-Rokicka, B. *New Forests* 46:195-215. 2015.
70. © **Inoculation of *Pinus pinea* seedlings with *Pisolithus tinctorius* and *Suillus bellinii* promotes plant growth in benfluralin contaminated soil.** Franco, A. R. and Castro, P. M. L. *Plant and Soil* 386:113-123. 2015.
71. © **Interaction with ectomycorrhizal fungi and endophytic *Methylobacterium* affects nutrient uptake and growth of pine seedlings in vitro.** Pohjanen, J., Koskimaki, J. J., Sutela, S., and Ardanov, P. *Tree Physiology* 34:993-1005. 2014.
72. © **Mosaic stunting in bareroot *Pinus banksiana* seedlings is unrelated to colonization by mycorrhizal fungi.** Potvin, L. R., Jurgensen, M. F., Dumroese, R. K., Richter, D. L., and Page-Dumroese, D. S. *New Forests* 45:893-903. 2014.
73. © **Physiological and growth responses of young tomato seedlings to drip-irrigation containing two low doses of the arbuscular mycorrhizal fungus *Glomus iranicum* var. *tenuihypharum* sp. nova.** Fernandez, F., Vicente-Sanchez, J., Maestre-Valero, J. F., and Bernabe, A. J. *Journal of Horticultural Science & Biotechnology* 89(6):679-685. 2014.
74. © **Potassium nutrition of ectomycorrhizal *Pinus pinaster*: overexpression of the *Hebeloma cylindrosporum* HcTrk1 transporter affects the translocation of both K<sup>+</sup> and phosphorus in the host plant.** Garcia, K., Delteil, A., Conejero, G., and Becquer, A. *New Phytologist* 201:951-960. 2014.



## Nursery Structures & Equipment



**75. An active heat storage-release system using circulating water to supplement heat in a Chinese solar greenhouse.** Yang, Q., Zhang, Y., Fang, H., Li, W., Lu, W., and Tong, Y. *Acta Horticulturae* 1037:49-56. 2014.

**76. Combined roof and side ventilation with misting and air blowing for cooling tropical greenhouses.** Weerakkody, W. A. P., Jayasinghe, J. M. U., and Prathapasinghe, G. *Acta Horticulturae* 1037:555-562. 2014.

**77. Comparative performance of a greenhouse cooling strategy with natural ventilation and fogging under different outside climates.** Villarreal-Guerrero, F. and Flores-Velaquez, J. Kacira M. *Acta Horticulturae* 1037:57-64. 2014.

**78. Comparative study of the Risutec Automatic Plant Container (APC) and Bracke planting devices.** Laine, T. and Saarinen, V.-M. *Silva Fennica* 48(3): Article 1161. 16 p. 2014.

**79. A dehumidification strategy to avoid condensation on plants and spare energy in greenhouse.** Chas-seriaux, G., Chantoiseau, E., Migeon, C., and Bournet, P. E. *Acta Horticulturae* 1037:453-460. 2014.

**80. © Evaluation of a mobile steam applicator for soil disinfestation in California strawberry.** Fennimore, S. A., Martin, F. N., Miller, T. C., Broome, J. C., Dorn, N., and Greene, I. *HortScience* 49(12):1542-1549. 2014.

**81. Evaluation of the Decagon 5TE sensor as a tool for irrigation and salinity management in a sandy soil.** McCann, I. R., Fraj. M.B., and Dakheel, A. *Acta Horticulturae* 1054:153-160. 2014.

**82. Material technology of diffuse greenhouse covering materials - influence on light transmission, light scattering and light spectrum.** Hemming, S., Mohammadkhani, V., and van Ruijven, J. *Acta Horticulturae* 1037:883-896. 2014.

**83. Measurement of overall heat transfer coefficient of covering material with thermal screens for plastic greenhouse.** Lee, H. W., Lee, J. W., Diop, S., and Na, O. H. *Acta Horticulturae* 1037:219-224. 2014.

**84. © Mini-horhizotron: an apparatus for observing and measuring root growth of container-grown plant material in situ.** Judd, L. A., Jackson, B. E., Yap, T. C., and Fonteno, W. C. *HortScience* 49(11):1424-1431. 2014.

**85. Photovoltaic shade houses for hot, arid climates.** Lieth, J. H. *Acta Horticulturae* 1051:71-75. 2014.

**86. Producing commercial-quality ornamental seedlings under sole-source LED lighting.** Wollaeger, H. M. and Runkle, E. S. *Acta Horticulturae* 1037:269-274. 2014.

**87. Solar light-guide power windows for the greenhouse.** Lin, C.-T., Ishigami, Y., Hikosaka, S., and Goto, E. *Acta Horticulturae* 1037:187-194. 2014.

**88. Temperature gradients in fan-ventilated greenhouses.** Teitel, M. and Zhao, Y. *Acta Horticulturae* 1037:617-622. 2014.

## Outplanting Performance



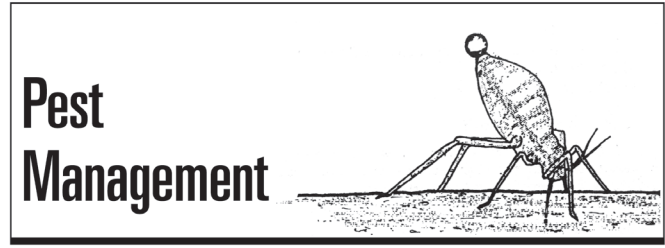
**89. © Comparing large containerized and bareroot conifer stock on sites of contrasting vegetation composition in a non-herbicide scenario.** Thiffault, N., Jobidon, R., and Munson, A. D. *New Forests* 45:875-891. 2014.

**90. © The cutting reproduction technique of *Salix oritrepha* and its application on degraded grasslands restoration.** Kang, J. J., Zhao, W. Z., Zhao, M., Zheng, Y., and Yang, K. *Journal of Soil and Water Conservation* 70(1):45-53. 2015.

**91. Direct seeding southern pines: development of techniques, use, and current status.** Barnett, J. *Tree Planters' Notes* 57(1):35-48. 2014.

**92. Effects of combination plowing on the survival and growth of loblolly pine.** Carlson, C. A., Fox, T. R., Allen, H. L., and Albaugh, T. J. *Tree Planters' Notes* 57(2):18-22. 2014.

- 93. © Evaluation of afforestation development and natural colonization on a reclaimed mine site.** Laarmann, D., Korjus, H., Sims, A., and Kangur, A. *Restoration Ecology* 23(3):301-309. 2015.
- 94. © Four-year response of underplanted American chestnut (*Castanea dentata*) and three competitors to midstory removal, root trenching, and weeding treatments in an oak-hickory forest.** Belair, E. D., Saunders, M. R., and Bailey, B. G. *Forest Ecology and Management* 329:21-29. 2014.
- 95. © Growth performance and chestnut blight incidence (*Cryphonectria parasitica*) of backcrossed chestnut seedlings in surface mine restoration.** Bauman, J. M., Keiffer, C. H., and McCarthy, B. C. *New Forests* 45:813-828. 2014.
- 96. Inoculation response by irrigation system type for desert tree establishment.** Bainbridge, D. A. *Tree Planters' Notes* 57(2):44-52. 2014.
- 97. © Nurse trees as a forest restoration tool for mixed plantations: effects on competing vegetation and performance in target tree species.** Lof, M., Bolte, A., Jacobs, D. F., and Jensen, A. M. *Restoration Ecology* 22(6):758-765. 2014.
- 98. Stocktype influences western white pine seedling size 6 years after outplanting.** Regan, D. J., Apostol, K. G., and Davis, A. S. *Tree Planters' Notes* 58(1):37-41. 2015.
- 99. Strategies for establishing ponderosa pine seedlings in a repeatedly grazed area of the Navajo Forest in Arizona—20-year results.** Arbab, A. K., Lansing, L. C., and Billy, D. *Tree Planters' Notes* 57(1):27-34. 2014.
- 100. © Stumping trials in British Columbia — organic matter removal and compaction effects on tree growth from seedlings to midrotation stands.** Norris, C. E., Hogg, K. E., Maynard, D. G., and Curran, M. P. *Canadian Journal of Forest Research* 44:1402-1418. 2014.
- 101. © Survival and growth of northern white-cedar and balsam fir seedlings in riparian management zones in northern Minnesota, USA.** Palik, B. J., Haworth, B. K., David, A. J., and Kolka, R. K. *Forest Ecology and Management* 337:20-27. 2015.
- 102. © Testing Aleppo pine seed sources responses to climate change by using trial sites reflecting future conditions.** Taibi, K., del Campo, A. D., Mulet, J. M., and Aguado, A. *New Forests* 45:603-624. 2014.
- 103. © White spruce (*Picea glauca*) structural root system development and symmetry influenced by disc trenching site preparation.** Amichev, B. Y., Bailey, B. E., and Van Rees, K. C. J. *Forest Ecology and Management* 326:1-8. 2014.



- 104. Assessing inoculum of soilborne plant pathogens: theory and practice in decision-making for soil disinfection.** Termorshuizen, A. J. and Jeger, M. J. *Acta Horticulturae* 1044:75-80. 2014.
- 105. Breaking the bondage to methyl bromide in agriculture — UNIDO experience.** Castella-Lorenzo, G., Savigliano, R., and Pizano, H. *Acta Horticulturae* 1044:281-287. 2014.
- 106. Damage by the pine weevil *Hylobius abietis* to seedlings of two native and five introduced tree species in Sweden.** Nordenhem, W. K. and Nordlander, G. *Silva Fennica* 48(4). 14 p. 2014.
- 107. © Detection, diversity, and population dynamics of waterborne *Phytophthora ramorum* populations.** Eyre, C. A. and Garbelotto, M. *Phytopathology* 105:57-68. 2015.
- 108. © Development of rapid isothermal amplification assays for detection of *Phytophthora* spp. in plant tissue.** Miles, T. D., Martin, F. N., and Coffey, M. D. *Phytopathology* 105:265-278. 2015.
- 109. Development of suppressiveness to *Fusarium oxysporum* in container media and soil amended with fish emulsion and fish hydrolyzed.** Bettiol, W., Forner, C., and Mattos, L. P. V. *Acta Horticulturae* 1044:133-138. 2014.
- 110. © Effect of a physical barrier on adult emergence and egg survival associated with the fungus gnat, *Bradysia* sp. nr. *coprophila* (Diptera: Sciaridae), under laboratory conditions.** Raudenbush, A. L., Cloyd, R. A., and Echegaray, E. R. *HortScience* 49(7):905-910. 2014.
- 111. © Efficacy of binary pesticide mixtures against western flower thrips.** Cloyd, R. A. and Raudenbush, A. L. *HortTechnology* 24(4):449-456. 2014.

- 112. Evaluation of microbiological products to control grey mould in strawberries.** Balode, A. *Acta Horticulturae* 1053:85-90. 2014.
- 113. © First detection in the US: new plant pathogen, *Phytophthora tentaculata*, in native plant nurseries and restoration sites in California.** Rooney-Latham, S., Blomquist, C. L., Swiecki, T., Bernhardt, E., and Frankel, S. J. *Native Plants Journal* 16(1):23-26. 2015.
- 114. © First report of *Fagus sylvatica* infection by *Fusarium avenaceum* in forest container nurseries in northeastern Poland.** Okorski, A., Pszczolkowska, A., Okorska, S., and Fordonski, G. *Plant Disease* 99(3):420. 2015.
- 115. Fungicide resistance in *Pythium* and *Phytophthora* from ornamentals in Georgia.** Williams-Woodward, J. L. and DeMott, M. E. *International Plant Propagators' Society, combined proceedings 2013*, 63:453-456. 2014.
- 116. © Identifying rates of meadowfoam (*Limnanthes alba*) seed meal needed for suppression of *Meloidogyne hapla* and *Pythium irregulare* in soil.** Ersahin, Y. S., Welland, J. E., Zasada, I. A., Reed, R. L., and Stevens, J. F. *Plant Disease* 98:1353-1260. 2014.
- 117. Integrated pest management in connection with soil disinfestation.** Katan, J. *Acta Horticulturae* 1044:19-28. 2014.
- 118. Laser tag: intelligent sprayers change the pest management game.** Fulcher, A., Cochran, D., Rosetta, R., and Zondag, R. *International Plant Propagators' Society, combined proceedings 2013*, 63:447-451. 2014.
- 119. © Mixtures as a fungicide resistance management tactic.** van den Bosch, F., Paveley, N., van den Berg, F., Hobbelen, P., and Oliver, R. *Phytopathology* 104:1264-1273. 2014.
- 120. © The National Plant Diagnostic Network: partnering to protect plant systems.** Stack, J. P., Bostock, R. M., Hammerschmidt, R., Jones, J. B., and Luke, E. *Plant Disease* 98(6):708-715. 2014.
- 121. Nursery certification.** Mctavish, B. and Barnett, C. *International Plant Propagators' Society, combined proceedings 2013*, 63:179-181. 2014.
- 122. Organic amendments and pathogen control: phytopathological and agronomic aspects.** Chellemi, D. O., Noling, J. W., and Sambhav, S. *Acta Horticulturae* 1044:95-104. 2014.
- 123. © Phytophthora community structure analyses in Oregon nurseries inform systems approaches to disease management.** Parke, J. L., Knaus, B. J., Fieland, V. J., Lewis, C., and Grunwald, N. J. *Phytopathology* 104:1052-1062. 2014.
- 124. © *Phytophthora* populations in nursery irrigation water in relationship to pathogenicity and infection frequency of *Rhododendron* and *Pieris*.** Loyd, A. L., Benson, D. M., and Ivors, K. L. *Plant Disease* 98:1213-1220. 2014.
- 125. The potential of organic amendments to enhance soil suppressiveness against *Rhizoctonia solani* disease in different soils and crops.** Postma, J., Schilder, M. T., and Stevens, L. H. *Acta Horticulturae* 1044:127-132. 2014.
- 126. Soil-applied imidacloprid translocates to ornamental flowers and reduces survival of adult *Coleomegilla maculata*, *Harmonia axyridis*, and *Hippodamia convergens* lady beetles, and larval *Danaus plexippus* and *Vanessa cardui* butterflies.** Krischik, V., Rogers, M., Gupta, G., and Varshney, A. *PLoS ONE* 10(3):e0119133. 2015.
- 127. © Remarkable predominance of a small number of genotypes in greenhouse populations of *Botrytis cinerea*.** Bardin, M., Decognet, V., and Nicot, P. C. *Phytopathology* 104:859-864. 2014.
- 128. Safeguarding against future invasive forest insects.** Hitchcox, M. *Tree Planters' Notes* 58(1):27-36. 2015.
- 129. Sanitation can be a foundation disease management tool: potential of spreading binucleate *Rhizoctonia* from nursery propagation floors to trays containing azalea stem cuttings.** Copes, W. E. *International Plant Propagators' Society, combined proceedings 2013*, 63:475-477. 2014.
- 130. © Worldwide integrated assessment of the impacts of systemic pesticides on biodiversity and ecosystems.** Task Force on Systemic Pesticides. *Environmental Science and Pollution Research* 22:1-171. 2015.



## Seedling Physiology and Morphology



**131. © Carbon allocation of Chinese pine seedlings along a nitrogen addition gradient.** Want, G. and Liu, F. *Forest Ecology and Management* 334:114-121. 2014.

**132. © Elevated [CO<sup>2</sup>] and growth temperature have a small positive effect on photosynthetic thermotolerance of *Pinus taeda* seedlings.** Bauweraerts, I., Man-naerts, T. B. L., Wertin, T. M., McGuire, M. A., Teskey, R. O., and Steppe, K. *Trees* 28:1515-1526. 2014.

**133. © Elevated temperature differently affects foliar nitrogen partitioning in seedlings of diverse Douglas fir provenances.** Du, B., Jansen, J., Junker, L. V., and Eiblmeier, M. *Tree Physiology* 34:1090-1101. 2014.

**134. © Fertilization regime interacts with fall temperature in the nursery to determine the frost and drought tolerance of the Mediterranean oak *Quercus ilex subsp ballota*.** Heredia-Guerrero, N., Oliet, J. A., Villar-Salvador, P., Benito, L. F., and Penuelas, J. L. *Forest Ecology and Management* 331:50-59. 2014.

**135. Gibberellins and cytokinins: a review.** Barnes, H. W. *International Plant Propagators' Society, combined proceedings 2013*, 63:323-336. 2014.

**136. How plant hormones work - auxin.** Geneve, R. L. *International Plant Propagators' Society, combined proceedings 2013*, 63:293-298. 2014.

**137. Improving field survival of pine seedlings and cuttings: the Sappi Plant Quality Index.** Ford, C. *International Plant Propagators' Society, combined proceedings 2013*, 63:11-16. 2014.

**138. © Leaf physiology and biomass allocation of backcross hybrid American chestnut (*Castanea dentata*) seedlings in response to light and water availability.** Brown, C. E., Mickelbart, M. V., and Jacobs, D. F. *Tree Physiology* 34:1362-1375. 2014.

**139. Measurements of the photosynthetic rates in vegetables under various qualities of light from light-emitting diodes.** Goto, E., Matsumoto, H., Ishigami, Y., and Hikosaka, S. *Acta Horticulturae* 1037:261-268. 2014.

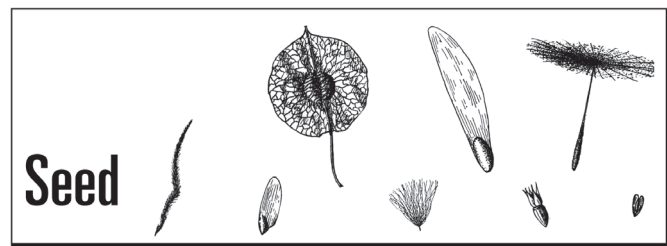
**140. © Pressure-volume curves: revisiting the impact of negative turgor during cell collapse by literature review and simulations of cell micromechanics.** Ding, Y., Zhang, Y., Zheng, Q.-S., and Tyree, M. T. *New Phytologist* 203:378-387. 2014.

**141. © Salicylic acid induces physiological and biochemical changes in *Torreya grandis* cv. Merrill seedlings under drought stress.** Shen, C., Hu, Y., Du, X., Li, T., Tang, H., and Wu, J. *Trees* 28:961-970. 2014.

**142. © Seedling evaluation of Atlantic coastal and piedmont sources of *Pinus taeda* L. and their hybrids for cold hardiness.** Zapata-Valenzuela, J. A., Ogut, F., Kegley, A., and Cumbie, P. *Forest Science* 61(1):169-175. 2015.

**143. © Storability measures of Norway spruce and Scots pine seedlings and assessment of post-storage vitality by measuring shoot electrolyte leakage.** Lindstrom, A., Stattin, E., Grans, D., and Wallin, E. *Scandinavian Journal of Forest Research* 29(8):717-724. 2014.

**144. © Temperature effects on nitrogen form uptake by seedling roots of three contrasting conifers.** Boczulak, S. A., Hawkins, B. J. and Roy, R. *Tree Physiology* 34(5):513-523. 2014.



**145. Assembling seed moisture testers, seed dryers, and cone dryers from repurposed components.** Karfalt, R. P. *Tree Planters' Notes* 57(2):11-17. 2014.

**146. Comparison of physical, acid, and hot water scarification on seed germination in eastern redbud.** Mylor, K., Holton, S., Geneve, R. L., and Calyskan, S. *International Plant Propagators' Society, combined proceedings 2013*, 63:347-349. 2014.

**147. © A laboratory exercise in physiological seed dormancy using eastern redbud.** Caliskan, S., Kester, S. T., and Geneve, R. L. *HortTechnology* 24(3):403-406. 2014.

**148. Provenance and seed mass determines the seed germination success of *Eucalyptus ovata* (Myrtaceae).** Harrison, P. A., Bailey, T. G., Vaillancourt, R. E., and Potts, B. M. *Seed Science and Technology* 42:466-472. 2014.

**149. © The role of cold storage and seed source in the germination of three Mediterranean shrub species with contrasting dormancy types.** Vasques, A., Vallejo, V. R., Santos, M. C., and Keizer, J. J. *Annals of Forest Science* 71:863-872. 2014.

**150. © A “seed gun” for high throughput percussion scarification of New Mexico locust: a model for hard-seeded species.** Mexal, J. G., Hawthorne, J., Martinez, S., Ulery, A., and Wagner, A. *Native Plants Journal* 16(1):13-17. 2015.



**151. The development of responsibly sourced growing media components and mixes.** Bragg, N. and Brough, W. *International Plant Propagators' Society, combined proceedings 2013*, 63:141-144. 2014.

**152. © The effect of soil compaction at different depths on cork oak seedling growth.** Dinis, C., Survoy, P., Rieiro, N., and Oliveira, M. R. G. *New Forests* 46:235-246. 2015.

**153. © Influence of pine bark particle size and pH on cation exchange capacity.** Altland, J. E., Locke, J. C., and Krause, C. R. *HortTechnology* 24(5):554-559. 2014.

**154. © Marigold and pepper growth in container substrates made from biosolids composted with carbon-rich organic wastes.** Hummel, R. L., Cogger, C., Bary, A., and Riley, R. *HortTechnology* 24(3):325-333. 2014.

**155. © A new local sustainable inorganic material for soilless culture in Spain: granulated volcanic rock.** Pozo, J., Alvaro, J. E., Morales, I., and Requena, J. *HortScience* 49(12):1537-1541. 2014.

**156. © Plant root and mycorrhizal fungal traits for understanding soil aggregation.** Rillig, M. C., Aguilar-Trigueros, C. A., Bergmann, J., and Verbruggen, E. *New Phytologist* 205:1385-1388. 2015.

**157. © Rhizometer: an apparatus to observe and measure root growth and its effect on container substrate physical properties over time.** Judd, L. A., Jackson, B. E., and Fonteno, W. C. *HortScience* 50(2):288-294. 2015.

**158. Soil biology for resilient, healthy soil.** Lehman, R. M., Acosta-Martinez, V., Buyer, J. S., and Cambardella, C. A. *Journal of Soil and Water Conservation* 70(1):12A-18A. 2015.

**159. © Soil solarization in high tunnels in the semi-arid southwestern United States.** Hanson, K., Mahato, T., and Schuch, U. K. *HortScience* 49(9):1165-1170. 2014.

**160. © Urea hydrolysis in pine tree substrate is affected by urea and lime rates.** Niemiera, A. X., Taylor, L. L., and Shreckhise, J. H. *HortScience* 49(11):1437-1443. 2014.



**161. © Effects of nursery management practices on morphological quality attributes of tree seedlings at planting: the case of oil palm (*Elaeis guineensis* Jacq.).** Akpo, E., Stomph, T. J., Kossou, D. K., Omoro, A. O., and Struik, P. C. *Forest Ecology and Management* 324:28-36. 2014.

**162. Evaluation of drought tolerance in five native Caribbean tree species with landscape potential.** Morgan, M. and Zimmerman, T. W. *Tree Planters' Notes* 57(1):49-60. 2014.

**163. © Field growth performance of teak genotypes of different ages clonally produced by rooted cuttings, in vitro microcuttings, and meristem culture.** Monteuiis, O. and Goh, D. K. S. *Canadian Journal of Forest Research* 45:9-14. 2015.

**164. © Improving regeneration of mahogany: techniques for vegetative propagation of four African mahogany species using leafy stem cuttings.** Owusu, S. A., Opuni-Frimpong, E., and Antwi-Boasiako, C. *New Forests* 45:687-697. 2014.

**165. © Spatial variation in tree demography associated to domestic herbivores and topography: insights from a seeding and planting experiment.** Renison, D., Chartier, M. P., Menghi, M., and Marcora, P. I. *Forest Ecology and Management* 335:139-146. 2015.



**166. Clonal propagation of oak hybrids using a modified layering technique.** Denig, B. R., Macrae, P. F., Jr., Gao, X., and Bassuk, N. L. *International Plant Propagators' Society, combined proceedings 2013*, 63:253-262. 2014.

**167. © Cold storage of initial plant material affects positively somatic embryogenesis in *Pinus radiata*.** Montalban, I. A., Garcia-Mendiguren, O., Goicoa, T., Ugarte, M. D., and Moncalean, P. *New Forests* 46:309-317. 2015.

**168. Comparative rooting response of cuttings using a basal quick-dip in two water-soluble forms of IBA.** Blythe, E. K. *International Plant Propagators' Society, combined proceedings 2013*, 63:197-199. 2014.

**169. © Effects of cutting size and exogenous hormone treatment on rooting of shoot cuttings in Norway spruce [*Picea abies* (L.) Karst.].** OuYang, F., Wang, J., and Li, Y. *New Forests* 46:91-105. 2015.

**170. © Endophytic bacteria in plant tissue culture: differences between easy- and difficult-to-propagate *Prunus avium* genotypes.** Quambusch, M., Pirttila, A. M., Tejesvi, M. V., Winkelmann, T., and Bartsch, M. *Tree Physiology* 34(5):524-533. 2014.

**171. Light emitting diodes lights make rooting microcutting lilacs easier and safer.** Versolato, J.-M. *International Plant Propagators' Society, combined proceedings 2013*, 63:249-251. 2014.

**172. Micropropagation of sphagnum moss for peat land regeneration.** Wright, N. *International Plant Propagators' Society, combined proceedings 2013*, 63:115-120. 2014.

**173. More cheese please.** Gates, M. *International Plant Propagators' Society, combined proceedings 2013*, 63:237. 2014.

**174. © Rooting of *Prosopis alba* mini-cuttings.** Araujo Vieira de Souza, J. C., Bender A.G., Tivano, J. C., and Barroso, D. G. *New Forests* 45:745-752. 2014.

**175. © Shading stock plants with photosensitive nets affects the yield and rooting quality of their cuttings.** Nissim-Levi, A., Ovia, R., Kagan, S., and Oren-Shamir, M. *Journal of Horticultural Science and Biotechnology* 89(6):693-699. 2014.

**176. © Somatic embryogenesis and cryostorage of eastern hemlock and Carolina hemlock for conservation and restoration.** Merkle, S. A., Montello, P. M., Reece, H. M., and Kong, L. *Trees* 28:1767-1776. 2014.

**177. The use of Meta-Topolin as an alternative cytokinin in the tissue culture of *Eucalyptus* species.** van der Westhuizen, A. *International Plant Propagators' Society, combined proceedings 2013*, 63:25-28. 2014.



**178. © Determining the effect of carrier water pH and bicarbonate concentration on final pH of plant growth regulator solutions.** Camberato, D. M., Camberato, J. J., and Lopez, R. G. *HortScience* 49(9):1176-1182. 2014.

**179. © Growth and physiological responses of Rangpur lime seedlings irrigated by a prototype subirrigation tray.** Barreto, C. V. G., Ferrarezi, R. S., Arruda, F. B., and Testezlaf, R. *HortScience* 50(1):123-129. 2015.

**180. Innovative techniques to capture and re-use water for small scale nurseries in Washington State.** Brun, C. A. *International Plant Propagators' Society, combined proceedings 2013*, 63:201-206. 2014.

**181. © Modified Delphi survey on key attributes for selection of water-treatment technologies for horticulture irrigation.** Raudales, R. E., Irani, T. A., Hall, C. R., and Fisher, P. R. *HortTechnology* 24(3):355-368. 2014.

**182. © Plant species for the removal of Na<sup>+</sup> and Cl<sup>-</sup> from greenhouse nutrient solution.** Rozema, E. R., Gordon, R. J., and Zheng, Y. HortScience 49(8):1071-1075. 2014.

**183. © Reforestation - climate change and water resource implications.** Egginton, P., Beall, F., and Buttle, J. Forestry Chronicle 90(4):516-524. 2014.

**184. © Water movement through a pine-bark substrate during irrigation.** Hoskins, T. C., Owen, J. S., Jr., and Niemiera, A. X. HortScience 49(11):1432-1436. 2014.



**185. © Halosulfuron reduced purple nutsedge (*Cyperus rotundus*) tuber production and viability.** Webster, T. M. and Grey, T. L. Weed Science 62:637-646. 2014.

**186. © Oxyfluorfen strongly affects *Larix occidentalis* but minimally affects *Sagina procumbens* in a bareroot nursery.** Dumroese, R. K., Williams, J. L., Pinto, J. R., and Zhang, P. HortScience 49(5):603-607. 2014.