

A compact disk with all the following journal articles or publications in Adobe PDF format can be ordered using the Literature Order Form on the last page of this section. Note the 2 restrictions:

- 1. Copyrighted Material.** Items with © are copyrighted and require a fee for each copy, so we will only send you the title page and abstract. If you want the entire article, you can order copies on-line or from a library service.
- 2. Special Orders (SO).** Special orders are books or other publications that, because of their size or cost, require special handling. For some, the Forest Service has procured copies for free distribution, but others will have to be purchased. Prices and ordering instructions are given following each listing in the New Nursery Literature section.



- 1. Roots of success: marketing strategies for the 21st Century.** Doescher, I. National Proceedings: Forest and Conservation Nursery Associations - 2011, p.41-44. USDA Forest Service, Rocky Mountain Research Station, Proceedings RMRS-P-68. 2012.



- 2. Alternative containers for a sustainable greenhouse and nursery crop production.** Nambuthiri, S., Schnelle, R., Fulcher, A., and Geneve, R. University of Kentucky, Horticulture Department, Hortfact 6000. 11 p. 2013.
- 3. Alternatives to petroleum-based containers for the nursery industry.** Chappell, M. and Knox, G. W. University of Georgia, Cooperative Extension, Bulletin 1407. 4 p. 2012.

- 4. © Biocontainer water use in short-term greenhouse crop production.** Koeser, A., Lovell, S. T., Evans, M., and Stewart, J. R. HortTechnology 23(2):215-219. 2013.

- 5. © Compatibility of biocontainers in commercial greenhouse crop production.** Koeser, A., Kling, G., Miller, C., and Warnock, D. HortTechnology 23(2):149-156. 2013.

- 6. © Growth of cyclamen in biocontainers on an ebb-and-flood subirrigation system.** Beeks, S. A. and Evans, M. R. HortTechnology 23(2):173-176. 2013.

- 7. © Physical properties of biocontainers used to grow long-term greenhouse crops in an ebb-and-flood irrigation system.** Beeks, S. A. and Evans, M. R. HortScience 48(6):732-737. 2013.

- 8. Root growth, plug cohesion, mineral nutrition, and carbohydrate content of 1+0 *Picea mariana* seedlings in response to a short-day treatment.** Lamhammedi, M. S., Renaud, M., Desjardins, P., and Veilleux, L. Tree Planters' Notes 56(1):35-46. 2013.



- 9. © Banking Wyoming big sagebrush seeds.** Karrfalt, R. P. and Shaw, N. Native Plants Journal 14(1):60-69. 2013.

10. © **Boiled, tumbled, burned, and heated: seed scarification techniques for Munro's globemallow appropriate for large-scale application.** Kildisheva, O. A., Dumroese, R. K., and Davis, A. S. *Native Plants Journal* 14(1):42-47. 2013.
11. © **Chemical control of weeds and genetic off-types in smooth cordgrass (*Spartina alterniflora*) production ponds.** Levy, N. J., Knott, C. A., Webster, E. P., and Hensley, J. B. *Ecological Restoration* 31(1):19-22. 2013.
12. **Developing native plant nurseries in emerging market areas.** Duemler, E. *National Proceedings: Forest and Conservation Nursery Associations - 2011*, p. 39-40. USDA Forest Service, Rocky Mountain Research Station, Proceedings RMRS-P-68. 2012.
13. © **Ecologically appropriate plant materials for restoration applications.** Jones, T. A. *BioScience* 63(3):211-219. 2013.
14. © **Ecosystem restoration is now a global priority: time to roll up our sleeves.** Aronson, J. and Alexander, S. *Restoration Ecology* 21(3):293-296. 2013.
15. © **Examining smoke water as a potential germination-enhancing technique to aid the recovery of the endangered Franciscan manzanita (*Arctostaphylos franciscana* (Eastw. [Ericaceae])).** Laskowski, M. J., Dickson, C. C., Schaefer, B., and Young, B. *Native Plants Journal* 14(1):49-54. 2013.
16. **Forb seedling identification guide for the Inland Northwest: native, introduced, invasive and noxious species.** Pavek, P., Erhardt, B., Heekin, T., and Old, R. *Natural Resources Conservation Service, Washington*. 146 p. 2013.
17. © **Genetic variation in adaptive traits and seed transfer zones for *Pseudoroegneria spicata* (blue-bunch wheatgrass) in the northwestern United States.** St. Clair, J. B., Kilkenny, F. F., Johnson, R. C., Shaw, N. L., and Weaver, G. *Evolutionary Applications* (online). 2013.
18. **Germination and seed coat histology of physically dormant *Desmanthus illinoensis* seeds.** Olszewski, M. W., D'Agostino, J. A., Grouch, A. F., and Vertenten, C. M. *Seed Science and Technology* 41:36-49. 2013.
19. **Going native: plants that grow naturally in the Pacific Northwest are gaining in popularity.** Petersen, E. *Digger* 55(6):15-17, 20-22. 2013.
20. **Improving germination of red elm (*Ulmus rubra*), gray alder (*Alnus incana*) and buffaloberry (*Shepherdia canadensis*) seeds with gibberellic acid.** Morales, B., Barden, C., Boyer, C., and Griffin, J. *National Proceedings: Forest and Conservation Nursery Associations - 2011*, p.93-95. USDA Forest Service, Rocky Mountain Research Station, Proceedings RMRS-P-68. 2012.
21. © **Monarchs (*Danaus plexippus*) and milkweeds (*Asclepias* species): The current situation and methods for propagating milkweeds.** Luna, Tara and Dumroese, R. *Kasten Native Plants Journal* 14(1):5-15. 2013.
22. **Pocket guide to sagebrush.** Shultz, L. *PRBO Conservation Science*. 86 p. 2012.
23. © **A propagation protocol for pasture rose (*Rosa carolina* L.).** Sollenberger, D. S. and Thomas, C. *Native Plants Journal* 14(1):39-41. 2013.
24. **Restoration potentials and challenges for *Sphaeralcea munroana*.** Kildisheva, O. A. and Davis, A. S. *National Proceedings: Forest and Conservation Nursery Associations - 2011*, p. 65-71. USDA Forest Service, Rocky Mountain Research Station, Proceedings RMRS-P-68. 2012.
25. © **Seed cryostorage and micropropagation of Georgia aster, *Symphytotrichum georgianum* (Alexander) Nesom: a threatened species from the southeastern United States.** Lynch, S., Johnston, R. K., Determann, R. O., Cruse-Sanders, J. M., and Pullman, G. S. *Hort Science* 48(6):750-755. 2013.
26. © **Selecting species for passive and active riparian restoration in southern Mexico.** Meli, P. Martinez-Ramos M. and Rey-Benayas, J. M. *Restoration Ecology* 21(2):163-165. 2013.
27. © **Soaking Nebraska sedge seeds in warm, aerated water improves germination.** Tilley, D. J. *Native Plants Journal* 14(1):55-88. 2013.
28. **Tamarisk coalition - native riparian plants materials program.** Kolegas, S. *National Proceedings: Forest and Conservation Nursery Associations - 2011*, p.76-78. USDA Forest Service, Rocky Mountain Research Station, Proceedings RMRS-P-68. 2012.
29. © **Taming the beast: managing hydrology to control Carolina willow (*Salix caroliniana*) seedlings and cuttings.** Quintana-Ascencio, P. F., Fauth, J. E., Morales, L. M. C., and Ponzio, K. J. *Restoration Ecology*. 2013.

30. © **Technique for rapid establishment of American lotus in remediation efforts.** Ryon, Michael G., Fortner, A. M., Goins, K. N., and Jett, R. T. *Native Plants Journal* 14(1):33-38. 2013.

31. © **Tolerance of Hooker's evening primrose transplants to preemergence herbicides.** Bates, A. N., Henry, G. M., and McKenney, C. B. *HortTechnology* 23(1):24-27. 2013.



32. © **Comparing the adequacy of controlled-release and water-soluble fertilizers for bedding plant production.** Camberato, D. M., Camberato, J. J., and Lopez, R. G. *HortScience* 48(5):556-562. 2013.

33. © **Elevated relative humidity increases the incidence of distorted growth and boron deficiency in bedding plant plugs.** Krug, B. A., Whipker, B. E., McCall, I., and Frantz, J. *HortScience* 48(3):311-313. 2013.

34. © **Evaluating soil and foliar fertilization of *Abies nordmanniana* under container and field production.** Landgren, C., Owen, J. S., Jr., and Contreras, R. *Scandinavian Journal of Forest Research* 28(5):419-427. 2013.

35. © **Exponential nutrient loading shortens the cultural period of *Larix olgensis* seedlings.** Duan, J., Xu, C., Jacobs, D. F., and Ma, L. *Scandinavian Journal of Forest Research* 28(5):409-418. 2013.

36. © **Growth response and nitrogen use physiology of Fraser fir (*Abies fraseri*), red pine (I), and hybrid poplar under amino acid nutrition.** Wilson, A. R., Nzokou, P., Guney, D., and Kulac, S. *New Forests* 44:281-295. 2013.

37. © **Impacts of aerated compost tea on containerized *Acer saccharum* and *Quercus macrocarpa* saplings and soil properties in sand, uncompacted loam, and compacted loam soils.** Scharenbroch, B. C. *HortScience* 48(5):625-632. 2013.

38. © **Seedling growth and soil nutrient availability in exotic and native tree species: implications for afforestation in southern China.** Wang, F., Zhu, W., Zou, B., and Neher, D. A. *Plant and Soil* 364:207-218. 2013.

39. **Using organic fertilizers in forest and native plant nurseries.** Landis, T. D. and Dumroese, R. K. *National Proceedings: Forest and Conservation Nursery Associations - 2011*, p.45-52. USDA Forest Service, Rocky Mountain Research Station, Proceedings RMRS-P-68. 2013.

## General and Miscellaneous



40. **A brief history of reforestation and restoration in Louisiana.** Rentz, R. *Tree Planters' Notes* 56(1):13-23. 2013.

41. © **Cultural importance of white pine (*Pinus strobus* L.) to the Kitcisakik Algonquin community of western Quebec, Canada.** Upreti, Y., Asselin, H., and Bergeron, Y. *Canadian Journal of Forest Research* 43:544-551. 2013.

42. **Developing reforestation technology for southern pines: a historical perspective.** Barnett, J. *Tree Planters' Notes* 56(1):54-59. 2013.

43. © **Ecological restoration in a developing island nation: how useful is the science?** Florens, F. B. V. and Baider, C. *Restoration Ecology* 21(1):1-5. 2013.

44. **Life cycle assessment to study the carbon footprint of system components for Colorado blue spruce field production and use.** Ingram, D. L. *Journal of the American Society for Horticultural Science* 138(1):3-11. 2013.

45. **Perry pinyon pines protection project.** McCarthy, D. *National Proceedings: Forest and Conservation Nursery Associations - 2011*, p.96-101. USDA Forest Service, Rocky Mountain Research Station, Proceedings RMRS-P-68. 2012.

46. **The state and challenges of conservation nurseries in Afghanistan.** Harrington, J. T., Mexal, J. G., Wagner, A. M., and Parsons, T. *National Proceedings: Forest and Conservation Nursery Associations - 2011*, p.59-64. USDA Forest Service, Rocky Mountain Research Station, Proceedings RMRS-P-68. 2012.

**SO. National Proceedings: Forest and Conservation Nursery Associations - 2011.** Haase, D. L., Pinto, J. R., and Riley, L. E. USDA Forest Service, Rocky Mountain Research Station, Proceedings RMRS-P-68. 112 p. 2012. All papers are listed individual in this issue of Forest Nursery Notes. Available at: [http://www.fs.fed.us/rm/pubs/rmrs\\_p068.html](http://www.fs.fed.us/rm/pubs/rmrs_p068.html).

## Genetics and Tree Improvement



**47. Coastal Douglas-fir controlled-crossing guidelines.** Jayawickrama, K. J. S., Miller, L. K., and Cress, D. W. *Tree Planters' Notes* 56(1):60-73. 2013.

**48. © Delivering Sitka spruce with resistance against white pine weevil in British Columbia, Canada.** Alfaro, R. I., King, J. N., and van Akker, L. *Forestry Chronicle* 89(2):235-245. 2013.

**49. Restoring the American chestnut tree.** Burhans, B. and Hebard, F. V. National Proceedings: Forest and Conservation Nursery Associations - 2011, p. 24-25. USDA Forest Service, Rocky Mountain Research Station, Proceedings RMRS-P-68. 2012.

## Mycorrhizae & Beneficial Microorganisms



**50. © Different arbuscular mycorrhizae and competition with an exotic grass affect the growth of *Podocarpus cunninghamii* Colenso cuttings.** Williams, A., Ridgway, H. J., and Norton, D. A. *New Forests* 44:183-195. 2013.

**51. © Effects of two *Glomus* species on the growth and physiological performance of *Sophora davidii* seedlings under water stress.** Gong, M., Tang, M., Chen, H., Zhang, Q., and Feng, X. *New Forests* 44:399-408. 2013.

**52. © Mycorrhizal fungal establishment in agricultural soils: factors determining inoculation success.** Verbruggen, E., van der Heijden, M. G. A., Rillig, M. C., and Kiers, E. T. *New Phytologist* 197:1104-1109. 2013.

## Nursery Structures & Equipment



**53. © Comparison on intracanopy light-emitting diode towers and overhead high-pressure sodium lamps for supplemental lighting of greenhouse-grown tomatoes.** Gomez, C., Morrow, R. C., Bourget, C. M., Massa, G. D., and Mitchell, C. A. *HortTechnology* 23(1):93-98. 2013.

## Outplanting Performance



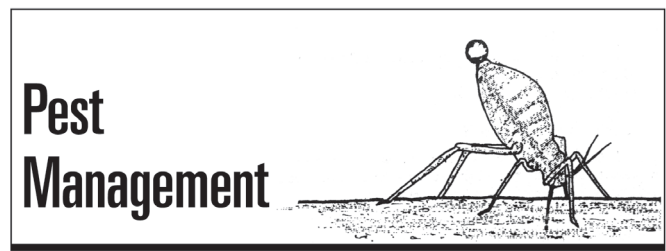
**54. Comparing seven planting tools for container-grown longleaf pine seedlings.** Haywood, J. D., Leduc, D. J., and Sung, S.-J. *Tree Planters' Notes* 56(1):30-34. 2013.

**55. © A comparison of long-term effects of scarification methods on the establishment of Norway spruce.** Johansson, K., Nilsson, U., and Orlander, G. *Forestry* 86:91-98. 2013.

**56. © Cost-quality relationship of Norway spruce planting and Scots pine direct seeding in privately owned forests in southern Finland.** Kankaanhuhta, V. and Saksa, T. *Scandinavian Journal of Forest Research* 28(5):481-492. 2013.

**57. Eco-buffers: a high density agroforestry design using native species.** Schroeder, W. National Proceedings: Forest and Conservation Nursery Associations - 2011, p. 72-75. USDA Forest Service, Rocky Mountain Research Station, Proceedings RMRS-P-68. 2012.

58. © **The effect of mechanical site preparation methods on the establishment of Norway spruce (*Picea abies* (L.) Karst.) and Douglas fir (*Pseudotsuga menziesii* (Mirb.) Franco) in southern Sweden.** Wallertz, K. and Malmqvist, C. *Forestry* 86:71-78. 2013.
59. **Evaluating reforestation success on a surface mine in eastern Kentucky.** Cotton, C., Barton, C., Lhotka, J., Angel, P. N., and Graves, D. *National Proceedings: Forest and Conservation Nursery Associations - 2011*, p.16-23. USDA Forest Service, Rocky Mountain Research Station, Proceedings RMRS-P-68. 2012.
60. © **Field performance of Scots pine (*Pinus sylvestris* L.) seedlings planted in disc trenched or mounded sites over an extended planting season.** Luoranen, J. and Rikala, R. *New Forests* 44:147-162. 2013.
61. **Historical periods of tree planting in the South.** Hernandez, G. *National Proceedings: Forest and Conservation Nursery Associations - 2011*, p.7-9. USDA Forest Service, Rocky Mountain Research Station, Proceedings RMRS-P-68. 2012.
62. **A history of tree planting in West Virginia.** Carvell, K. L. *National Proceedings: Forest and Conservation Nursery Associations - 2011*, p. 3-6. USDA Forest Service, Rocky Mountain Research Station, Proceedings RMRS-P-68. 2012.
63. **Management implications of using tree shelters for restoration of high elevation spruce-fir forests in the Rocky Mountains.** Jacobs, D. F. *National Proceedings: Forest and Conservation Nursery Associations - 2011*, p.79-81. USDA Forest Service, Rocky Mountain Research Station, Proceedings RMRS-P-68. 2012.
64. © **Prediction of planted seedling survival of five Mediterranean species based on initial seedling morphology.** Tsakalimi, M., Ganatsas, P., and Jacobs, D. F. *New Forests* 44:327-229. 2013.
65. **Reforesting unused surface mined lands by replanting with native trees.** Angel, P. N., Burger, J. A., Zipper, C. E., and Eggerud, S. *National Proceedings: Forest and Conservation Nursery Associations - 2011*, p.10-15. USDA Forest Service, Rocky Mountain Research Station, Proceedings RMRS-P-68. 2012.
66. © **Regeneration after stump harvesting in southern Finland.** Saksa, T. *Forest Ecology and Management* 290:79-82. 2013.
67. **Soil preparation method affects outplanting success of Norway spruce container seedlings on till soils susceptible to frost heave.** Heiskanen, J., Saksa, T., and Luoranen, J. *Silva Fennica* 47(1). 17 p. 2013.
68. © **Survival and 14-year growth of black, white, and swamp white oaks established as bareroot and RPM-containerized planting stock.** Walter, W. D., Godsey, L. D., Garrett, H. E., and Dwyer, J. P. *Northern Journal of Applied Forestry* 30(1):43-46. 2013.
69. © **Tree species selection revisited for plantations in the interior cedar hemlock zone of southern British Columbia.** Vyse, A., Cleary, M. R., and Cameron, I. R. *Forestry Chronicle* 89(3):382-391. 2013.
70. © **Twelve-year responses of planted and naturally regenerating conifers to variable-retention harvest in the Pacific Northwest, USA.** Urgenson, L. S., Halpern, C. B., and Anderson, P. D. *Canadian Journal of Forest Research* 43:46-55. 2013.
71. © **Variation in logging debris cover influences competitor abundance, resource availability, and early growth of planted Douglas-fir.** Harrington, T. B., Slesak, R. A., and Schoenholtz, S. H. *Forest Ecology and Management* 296:41-52. 2013.
72. © **White spruce (*Picea glauca*) restoration in temperate mixedwood stands using patch cuts and enrichment planting.** Hebert, F., Roy, V., Auger, I., and Gauthier, M.-M. *Forestry Chronicle* 89(3):392-400. 2013.



73. **An aversion to *Verticillium*: with proper attention, *Verticillium* wild disease can be managed.** Weiland, J. *Digger* 57(2):33-36. 2013.
74. **Biology and control of eriophyid mites with a case study of *Aceria* spp. on New Mexico Olive (*Forestiera pubescens* Nutt. var *pubescens*).** Grasswitz, T. R. *National Proceedings: Forest and Conservation Nursery Associations - 2011*, p. 86-89. USDA Forest Service, Rocky Mountain Research Station, Proceedings RMRS-P-68. 2012.

75. © **Carbon dioxide as a potential water disinfectant for *Phytophthora* disease risk mitigation.** Kong, P. *Plant Disease* 97:369-372. 2013.
76. © **Compost teas and reused nutrient solution suppress plant pathogens in vitro.** Tian, X. and Zheng, Y. *HortScience* 48(4):510-512. 2013.
77. **Culture practice and diseases of Finnish forest nurseries.** Lilja, A., Rikala, R., and Poteri, M. *Proceedings of the 7th Meeting of IUFRO Working Party 7.03.04*, p. 74-83. USDA Forest Service, Southern Region, Forest Health Protection Report 10-01-01. 2010.
78. **Dealing with damping off: proper sanitation and other precautions can protect seedlings against disease from various pathogens.** Weiland, J. and Santamaria, L. *Digger* 57(4):41-45. 2013.
79. **Disinfestation of recirculating nutrient solutions in greenhouse horticulture.** Ehret, D. L., Alsanian, B., Wohanka, W., Menzies, J. G., and Utkhede, R. *Agronomie* 21:323-339. 2001.
80. **Distribution and genetic diversity of root-rot pathogen *Neonectria macrodidyma* in forest nursery.** Menkis, A. and Vasaitis, R. *Proceedings of the 7th Meeting of IUFRO Working Party 7.03.04*, p. 113-117. USDA Forest Service, Southern Region, Forest Health Protection Report 10-01-01. 2010.
81. © **Distribution and genetic diversity of the root-rot pathogen *Neonectria macrodidyma* in a forest nursery.** Menkis, A. and Burokiene, D. *Forest Pathology* 42:79-83. 2012.
82. © **Hidden host plant associations of soilborne fungal pathogens: an ecological perspective.** Malcolm, G. M., Kuldau, G. A., Gugino, B. K., and Jimenez-Gasco, M. D. M. *Phytopathology* 103:538-544. 2013.
83. **The history and future of methyl bromide alternatives in the southern United States.** Starkey, T. E. *National Proceedings: Forest and Conservation Nursery Associations - 2011*, p.31-35. USDA Forest Service, Rocky Mountain Research Station, *Proceedings RMRS-P-68*. 2012.
84. © **Measuring root disease suppression in response to a compost water extract.** Curlango-Rivera, G., Pew, T., VanEtten, H. D., and Zhongguo, X. *Phytopathology* 103:255-260. 2013.
85. © **Nitrogen fertility influences growth and susceptibility of rhododendrons to *Phytophthora ramorum*.** Hummel, R. L., Elliott, M., Chastagner, G., and Riley, R. E. *HortScience* 48(5):601-607. 2013.
86. © **Nitrogen fertilization of the host plant influences production and pathogenicity of *Botrytis cinerea* secondary inoculum.** Abro, M. A., Lecompte, F., Bryone, F., and Nicot, P. C. *Phytopathology* 103:261-267. 2013.
87. © **One fungus, one name: defining the genus *Fusarium* in a scientifically robust way that preserves longstanding use.** Geiser, D. M., Aoki, T., Bacon, C. W., and Baker, S. E. *Phytopathology* 103(5):400-408. 2013.
88. **Pathogenicity and management of *Tylencho-rhynchus claytonia* in southern USA forest nurseries.** Cram, M. M. and Fraedrich, S. W. *Proceedings of the 7th Meeting of IUFRO Working Party 7.03.04*, p. 118-128. USDA Forest Service, Southern Region, Forest Health Protection Report 10-01-01. 2010.
89. © **Pathogenicity and virulence of *Pythium* species obtained from forest nursery soils on Douglas-fir seedlings.** Weiland, J. E., Beck, B. R., and Davis, A. *Plant Disease* 97:744-748. 2013.
90. ***Phytophthora cactorum*, *P. ramorum*, *P. plurivora*, *Melampsorium hiratsukanum*, *Dothistroma septosporum* and *Chalara fraxinae*, non-native pathogens in Finland.** Lilja, A., Rytönen, A., Hantula, J., Müller, M., and Kurkela, T. *Proceedings of the 7th Meeting of IUFRO Working Party 7.03.04*, p. 55-62. USDA Forest Service, Southern Region, Forest Health Protection Report 10-01-01. 2010.
91. **Putting the sun to work: solarization can be an effective way to kill pests, pathogens and weeds.** Parke, J. and Funahashi, F. *Digger* 55(6):33, 35-36. 2013.
92. ***Pythium* species associated with forest tree nurseries of Oregon and Washington.** Weiland, J. E. *Proceedings of the 7th Meeting of IUFRO Working Party 7.03.04*, p. 104-108. USDA Forest Service, Southern Region, Forest Health Protection Report 10-01-01. 2010.
93. © **The role of magnesium in plant disease.** Huber, D. M. and Jones, J. B. *Plant and Soil* 368:73-85. 2013.
94. **A sentinel plant network to help address the plants for planting pest pathway.** Britton, K. O. *Proceedings of the 7th Meeting of IUFRO Working Party 7.03.04*, p. 69-73. USDA Forest Service, Southern Region, Forest Health Protection Report 10-01-01. 2010.

95. © Steam as a preplant soil disinfestant tool in California cut-flower production. Rainbolt, C. M., Samtani, J. B., Fennimore, S. A., and Gilbert, C. A. HortTechnology 23(2):207-214. 2013.

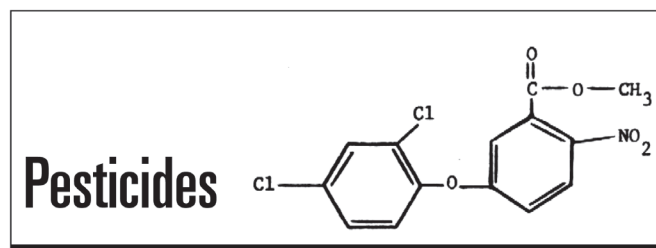
96. Storage conditions influence cultural detection of the shoot blight pathogen *Diplodia pinea* from asymptomatic red pine nursery seedlings. Stanosz, G. R., Smith, D. R., and Albers, J. Tree Planters' Notes 56(1):47-53. 2013.

97. © A survey of *Phytophthora* spp. in midwest nurseries, greenhouses, and landscapes. Leonberger, A. J., Speers, C., Ruhl, G., Creswell, T., and Beckerman, J. L. Plant Disease 97:635-640. 2013.

98. © Susceptibility of Fraser, Canaan, and Nordmann fir to root rot incited by *Phytophthora cactorum* and *Phytophthora drechsleri*. Hoover, B. K. HortTechnology 23(1):44-50. 2013.

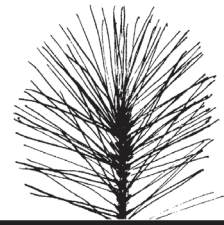
99. © The tolerance of *Pinus patula* x *Pinus tecunumanii*, and other pine hybrids, to *Fusarium circinatum* in greenhouse trials. Mitchell, R. G., Wingfield, M. J., Hodge, G. R., Steenkamp, E. T., and Coutinho, T. A. New Forests 44:443-456. 2013.

100. The use of prothioconazole to control forest nursery diseases of *Pinus* spp. Starkey, T. E. and Enebak, S. A. Proceedings of the 7th Meeting of IUFRO Working Party 7.03.04, p. 92-103. USDA Forest Service, Southern Region, Forest Health Protection Report 10-01-01. 2010.



101. Soil fumigation: the critical use exemption, quarantine pre-shipment rules, re-registration decision and their effect on the 2012 growing season. Enebak, S. A. National Proceedings: Forest and Conservation Nursery Associations - 2011, p.26-30. USDA Forest Service, Rocky Mountain Research Station, Proceedings RMRS-P-68. 2012.

## Seedling Physiology and Morphology



102. Genetic and environmental influences on cold hardiness of native and introduced riparian trees.

Friedman, J. M., Roelle, J. E., and Cade, B. S. National Proceedings: Forest and Conservation Nursery Associations - 2011, p. 82-85. USDA Forest Service, Rocky Mountain Research Station, Proceedings RMRS-P-68. 2012.

103. © Industrial-age changes in atmospheric [CO<sub>2</sub>] and temperature differentially alter responses of faster- and slower-growing *Eucalyptus* seedlings to short-term drought. Lewis, J. D., Smith, R. A., Ghanoum, O., and Logan, B. A. Tree Physiology 33:475-488. 2013.

104. © Low rot reserve accumulation during drought may lead to winter mortality in poplar seedlings. Galvez, D. A., Landhausser, S. M., and Tyree, M. T. New Phytologist 198:139-148. 2013.

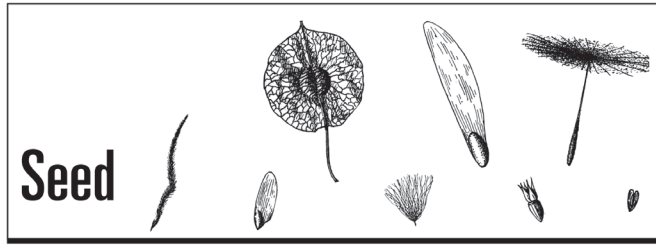
105. © Nitrogen nutrition and drought hardening exert opposite effects on the stress tolerance of *Pinus pinea* L. seedlings. Villar-Salvador, P., Penuelas, J. L., and Jacobs, D. F. Tree Physiology 33:221-232. 2013.

106. © Odors of Norway spruce (*Picea abies* L.) seedlings: differences due to age and chemotype. Kan-naste, A., Zhao, T., Lindstrom, A., and Stattin, E. Trees 27:149-159. 2013.

107. © Respiratory C fluxes and root exudation differ in two full-sib clones of *Pinus taeda* (L.) under contrasting fertilizer regimes in a greenhouse. Stovall, J. P., Seiler, J. R., and Fox, T. R. Plant and Soil 363:257-271. 2013.

108. © Spectral effects of three types of white light-emitting diodes on plant growth and development: absolute versus relative amounts of blue light. Cope, K. R. and Bugbee, B. HortScience 48(4):504-509. 2013.

109. © Survival, frost susceptibility, growth, and disease resistance of corkbark and subalpine fir grown for landscape and Christmas trees. Barney, D. L., Bauer, M., and Jensen, J. HortTechnology 23(2):194-200. 2013.



**110. Artificial rope-wick roots improve the germination and establishment of tree species.** Jarvis, J., Ivask, M., and Nei, L. *Seed Science and Technology* 40:433-436. 2012.

**111. © Efficacy of cork granulates as a top coat substrate component for seed germination as compared to vermiculite.** Bozzolo, A. and Evans, M. R. *HortTechnology* 23(1):114-118. 2013.

**112. Guidelines for seed collection and stratification of common juniper (*Juniperus communis* L.).** McCartan, S. A. and Gosling, P. G. *Tree Planters' Notes* 56(1):24-29. 2013.

**113. Methods for breaking the dormancy of eastern redbud (*Cercis canadensis*) seeds.** Li, S., Shi, T., Kong, F., and Ma, Q. *Seed Science and Technology* 41:27-35. 2013.

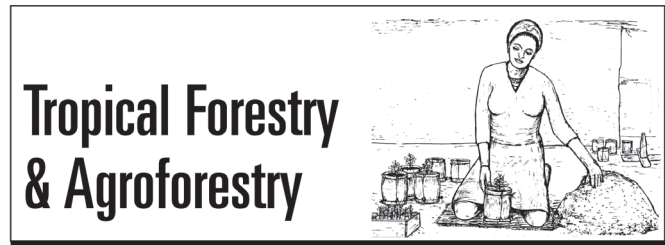
**114. © The relationship between seed weight, germination and biochemical reserves of maritime pine (*Pinus pinaster* Ait.) in Morocco.** Wahid, N. and Bou-noua, L. *New Forests* 44:385-397. 2013.



**115. Applications of hydrogels in the nursery and during outplanting.** Landis, T. D. and Haase, D. L. *National Proceedings: Forest and Conservation Nursery Associations - 2011*, p.53-58. USDA Forest Service, Rocky Mountain Research Station, Proceedings RMRS-P-68. 2013.

**116. © Greenhouse and field response of southern pine seedlings to pulp mill residues applied as soil amendments.** Morris, L. A., Sanders, J., Ogden, E. A., Goldmund, H., and White, C. M. *Forest Science* 58(6):618-632. 2012.

**117. © Nitrification in pine tree substrate is influenced by storage time and amendments.** Taylor, L. L., Niemiera, A. X., Wright, R. D., Evanylo, G. K., and Thomason, W. E. *HortScience* 48(1):115-122. 2013.



**118. Alleviation of seed dormancy in *Butia odorata* palm tree using drying and moist-warm stratification.** Schindwein, G., Schindwein, C. C. D., Tonietto, A., and Dillenburg, L. R. *Seed Science and Technology* 41:16-26. 2013.

**119. © Elevated night-time temperature increase growth in seedlings of two tropical pioneer tree species.** Cheesman, A. W. and Winter, K. *New Phytologist* 197:1185-1192. 2013.

**120. Increasing seed germination of *Bursera graveolens*, a promising tree for the restoration of tropical dry forests.** Morgan, M. and Jose, S. *Tree Planters' Notes* 56(1):74-83. 2013.

**121. © Phylogenetic ecology applied to enrichment planting of tropical native tree species.** Schweizer, D., Gilbert, G. S., and Holl, K. D. *Forest Ecology and Management* 297:57-66. 2013.

**122. Production of cuttings in response to stock plant temperature in the subtropical eucalypts, *Corymbia citriodora* and *Eucalyptus dunnii*.** Trueman, S. J., McMahon, T. V., and Bristow, M. *New Forests* 44:265-279. 2013.

**123. © Resprouting ability of dry forest tree species after disturbance does not relate to propagation possibility by stem and rooted cuttings.** Vieira, D. L. M., Coutinho, A. G., and da Rocha, G. P. E. *Restoration Ecology* 21(3):305-311. 2013.

**124. © Time matters: temporally changing effects of planting schemes and insecticide treatment on native timber tree performance on former pasture.** Riedel, J., Dorn, S., Plath, M., Potvin, C., and Mody, K. *Forest Ecology and Management* 297:49-56. 2013.



## Vegetative Propagation and Tissue Culture



**125. © Hot callusing for propagation of American beech by grafting.** Carey, D. W., Mason, M. E., Bloese, P., and Koch, J. L. HortScience 48(5):620-624. 2013.

**126. Micropropagation of threatened black alder.** San Jose, M. C., Janeiro, L. V., and Corredoira, E. Silva Fennica 47(1). 12 p. 2013.

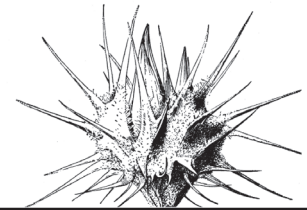
## Water Management



**127. © Design, construction, and operation of a demonstration rainwater harvesting system for greenhouse irrigation at McGill University, Canada.** Islam, S., Lefsrud, M., Adamowski, J., Bissonnette, B., and Busgang, A. HortTechnology 23(2):220-226. 2013.

**128. © Eradication of plant pathogens in forest nursery irrigation water.** Machado, P. da S., Alfenas, A. C., Coutinho, M. M., and Silva, C. M. Plant Disease 97:780-788. 2013.

## Weed Control



**129. © Combinations of corn gluten meal, clove oil, and sweep cultivation are ineffective for weed control in organic peanut production.** Johnson, W. C., Boudreau, M. A., and Davis, J. W. Weed Technology 27(2):417-421. 2013.

**130. © Evaluation of container ornamental species tolerance to three p-hydroxyphenylpyruvate dioxygenase-inhibiting herbicides.** Cutulle, M. A., Armel, G. R., Brosnan, J. T., and Kopsell, D. A. HortTechnology 23(3):319-324. 2013.

**131. © Temperature and relative humidity affect weed response to vinegar and clover oil.** Brainard, D. C., Curran, W. S., Bellinder, R. R., and Ngouajio, M. Weed Technology 27(1):156-164. 2013.

**132. © Yellow nutsedge (*Cyperus esculentus*) control with methyl iodide in combination with totally impermeable film.** McAvoy, T. P. and Freeman, J. H. Weed Technology 27(1):117-122. 2013.