



# New Nursery Literature

Copies of the following journal articles or publications are free and can be ordered using the Literature Order Form on the last page of this section. Just write in the appropriate number or letter on the form and return it to us. Note that there are three restrictions:

**1. Limit in the Number of Free Articles:** In an effort to reduce mailing costs, we are limiting the number of free articles that can be ordered through the FNN literature service. All subscribers will be restricted to 25 free articles per issue.

**2. Copyrighted Material.** Items with © are copyrighted and require a fee for each copy, so only the title page and abstract will be provided through this service. If you want the entire article, then you can order a copy from a library service.

**3. Special Orders (SO).** Special orders are books or other publications that, because of their size or cost, require special handling. For some, the Forest Service has procured copies for free distribution, but others will have to be purchased. Prices and ordering instructions are given following each listing in the New Nursery Literature section.



**1. Five years of Irish trials on biostimulants - the conversion of a skeptic.** Thompson, B. E. IN: National proceedings: Forest and Conservation Nursery Associations - 2003, p. 72-79. USDA Forest Service, Rocky Mountain Research Station, Proceedings RMRS-P-33. 2004. Reports on tests of Lysaplant, Plantali, and Kerry Algae.

**2. Nutrition and irrigation regime affect size and early growth of white oak seedlings.** Kormanik, P. P., Sung, S.-J. S., Kormanik, T. L., Tibbs, T., and Zarnoch, S. J. IN: Proceedings, 13th Central Hardwood Forest conference, 2002, p. 425-430.. USDA Forest Service, North Central Research Station, General Technical Report NC-234. 2003.

**3. A 'radicle' approach.** Krueger, D. G., Jr. and Swanson, B. T. American Nurseryman 199(4):26-29. 2004. Describes effective procedures any nursery can use to create fibrous root systems on oak seedlings.



**4. Avoid greenhouse taxes.** Bartok, J. W., Jr. Greenhouse Management and Production 24(1):87-88. 2004.



**5. Container seedling handling and storage in the Rocky Mountain and Intermountain regions.** Mandel, R. H. IN: National proceedings: Forest and Conservation Nursery Associations - 2003, p. 8-9. USDA Forest Service, Rocky Mountain Research Station, Proceedings RMRS-P-33. 2004. Overview of the container production program of Rocky Mountain Native Plants Company.

**6. Effect of acorn mass and size, and early shoot growth on one-year-old container-grown RPM oak seedlings.** Grossman, B. C., Gold, M. A., and Dey, D.

C. IN: Proceedings, 13th Central Hardwood Forest conference, 2002, p. 405-414. USDA Forest Service, North Central Research Station, General Technical Report NC-234. 2003.

**7. Growth and nutrient status of six species of nursery stock grown in a compost-based medium with recycled nutrients.** Chong, C., Lumis, G., Purvis, P., and Dale, A. *HortScience* 39(1):60-64. 2004.

**8. Growth control by mechanical conditioning in *Salvia splendens* Sellow ex Schult.** Verieri, P., Mugnai, S., and Tognoni, F. *Acta Horticulturae* 614:307-312. 2003.

**9. Growth control in processing tomato seedlings.** Duman, I. and Duzyaman, E. *Acta Horticulturae* 613:95-102. 2003.

**10. Weathering the cold.** Zinati, G. *American Nurseryman* 199(7):29-30, 32, 34-35. 2004. A nursery management specialist defines the facts about cold hardiness in container-grown nursery crops and discusses practices and protection techniques required to achieve it.

## Diverse Species



**11. Blending dry seeds clean.** Scianna, J. D. *Native Plants Journal* 5(1):47-48. 2004.

**12. Chemical treatments enhance seed germination in *Perideridia gaidneri*.** Phillips, N., Drost, D., and Varga, W. *Acta Horticulturae* 618:477-482. 2003.

**13. Cleaning grass seeds.** Archibald, C. and Dremann, C. *Native Plants Journal* 5(1):51-52. 2004.

**14. Collecting seeds from southeastern US woodland species.** Glick, B. *Native Plants Journal* 5(1):48-49. 2004.

**15. Cuisinart for cleaning elderberry (*Sambucus* spp. L. [Caprifoliaceae]) seeds.** Truscott, M. *Native Plants Journal* 5(1):46. 2004.

**16. Ecological impacts of wheat seeding after a Sierra Nevada wildfire.** Keeley, J. E. *International Journal of Wildland Fire* 13(1):73-78. 2004.

**17. © Effect of temperature regimes on germination of dimorphic seeds of *Atriplex prostrata*.** Carter, C. T., Brown, L. S., and Ungar, I. A. *Biologia Plantarum* 47(2):269-272. 2003.

**18. © Enhancing germination of eastern gamagrass seed with stratification and gibberellic acid.** Rogis, C., Gibson, L. R., Knapp, A. D., and Horton, R. *Crop Science* 44(2):549-552. 2004.

**19. Establishment of *Desmanthus* species in existing grass stands.** Muir, J. P. and Pitman, W. D. *Native Plants Journal* 5(1):5-13. 2004.

**20. Low cost tools for seed collection and seed sowing.** Thomas, D. *Native Plants Journal* 5(1):54-55. 2004.

**21. Micropropagation of *Lewisia cotyledon* using axillary buds from flower peduncles.** George, M. W. and Tripepi, R. R. *Native Plants Journal* 5(1):75-80. 2004.

**22. © Physical dormancy in seeds of *Dodonaea viscosa* (Sapindales, Sapindaceae) from Hawaii.** Baskin, J. M., Davis, B. H., Baskin, C. C., Gleason, S. M., and Cordell, S. *Seed Science Research* 14(1):81-90. 2004.

**23. Planting tools: an in-the-field perspective.** Kloetzel, S. *Native Plants Journal* 5(1):34-42. 2004. Reviews hand tools such as hoedads, dibbles, planting bars, shovels, pickmattocks and power tools such as augers, hammers, stingers, and Hy-Gro tiller.

**24. Propagating plant materials for the Hopi Reservation, Arizona.** Pinto, J. R. and Landis, T. D. IN: National proceedings: Forest and Conservation Nursery Associations - 2003, p. 80-84. USDA Forest Service, Rocky Mountain Research Station, Proceedings RMRS-P-33. 2004.

**25. Propagation and transplanting of an endangered alpine species Robbins' cinquefoil, *Potentilla robbinsiana* (Rosaceae).** Brumback, W. E., Weihrauch, D. M., and Kimball, K. D. *Native Plants Journal* 5(1):91-97. 2004.

**26. Propagation of giant cane (*Arundinaria gigantea*) for riparian habitat restoration.** Zaczek, J. J., Sexton, R. L., Williard, K. W. J., and Groninger, J. W. IN: National proceedings: Forest and Conservation Nursery Associations - 2003, p. 103-106. USDA Forest Service, Rocky Mountain Research Station, Proceedings RMRS-P-33. 2004.

**27. Propagation protocol for *Callirhoe involucrata*.** Alberts, D. and Mandel, R. Native Plants Journal 5(1):25-26. 2004.

**28. Propagation protocol of American lotus, *Nelumbo lutea* Willd.** Sayre, J. Native Plants Journal 5(1):14-17. 2004.

**29. Racquets, hoppers, and felt boards -- low-tech devices for processing seeds.** Jensen, S. Native Plants Journal 5(1):50-51. 2004.

**30. Seed production and germination in Long's bittercress (*Cardamine longii*) of Massachusetts.** Padgett, D. J., Cook, L., Horky, L., Noris, J., and Vale, K. Northeastern Naturalist 11(1):49-56. 2004.

**31. Shade limited root mass and carbohydrate reserves of the federally endangered beach clustervine, *Jacquemontia reclinata*, grown in containers.** Wright, S. J. and Fidelibus, M. W. Native Plants Journal 5(1):27-33. 2004.

**32. Species composition changes in a rooftop grass and wildflower meadow: implications for designing successful mixtures.** Dewey, D. W., Johnson, P. G., and Kjelgren, R. K. Native Plants Journal 5(1):56-65. 2004.

**33. Tissue-cultured creeping bluestem for restoration of phosphate-mined lands.** Kalmbacher, R., Norcini, J., Chakravarty, T., Ezenwa, I., and Martin, F. Native Plants Journal 5(1):81-90. 2004.

**34. Tumbling for seed cleaning and conditioning.** Dreesen, D. Native Plants Journal 5(1):52-54. 2004.

**35. © Variation in seed dormancy of the wetland sedge, *Carex elongata*, between populations and individuals in two consecutive years.** Schutz, W. and Rave, G. Seed Science Research 13(4):315-322. 2003.



**36. © Biosolids processing effects on first- and second-year available nitrogen.** Cogger, C. G., Bary, A. I., Sullivan, D. M., and Myhre, E. A. Soil Science Society of America Journal 68(1):162-167. 2004.

**37. © The effect of interspecific competition on conifer seedling growth and nitrogen availability measured using ion-exchange membranes.** Hangs, R. D., Greer,

K. J., and Sulewski, C. A. Canadian Journal of Forest Research 34(3):754-761. 2004.

**38. © Effects of phosphorus fertilization and liming on growth, mineral nutrition, and gas exchange of *Alnus rubra* seedlings grown in soils from mature alluvial *Alnus* stands.** Brown, K. R. and Courtin, P. J. Canadian Journal of Forest Research 33(11):2089-2096. 2003.

**39. Fate of nitrates in field nursery production systems.** Cregg, B., Rios, C., Hart, J., and Briggs, D. IN: National proceedings: Forest and Conservation Nursery Associations - 2003, p. 50-54. USDA Forest Service, Rocky Mountain Research Station, Proceedings RMRS-P-33. 2004.

**40. Fertilizer application: balancing precision, efficacy, and cost.** Triebwasser, M. E. IN: National proceedings: Forest and Conservation Nursery Associations - 2003, p. 38-41. USDA Forest Service, Rocky Mountain Research Station, Proceedings RMRS-P-33. 2004.

**41. Fertilizer mixing calculator.** Krug, B. A., Whipker, B. E., and Peet, M. Greenhouse Management and Production 24(2):41-43, 45. 2004. North Carolina State University's FERTCALC program provides information on how to precisely mix a fertilizer solution.

**42. General overview of nutrition for field and container crops.** Mahler, R. L. IN: National proceedings: Forest and Conservation Nursery Associations - 2003, p. 26-29. USDA Forest Service, Rocky Mountain Research Station, Proceedings RMRS-P-33. 2004.

**43. © Hydrogel modified uptake of salt ions and calcium in *Populus euphratica* under saline conditions.** Chen, S., Zomporodi, M., Fritz, E., Wang, S., and Huttermann, A. Trees: Structure and Function 18(2):175-183. 2004.

**44. Nutriplug™: the next generation.** Poirier, M. and Kiiskila, S. IN: National proceedings: Forest and Conservation Nursery Associations - 2003, p. 42-49. USDA Forest Service, Rocky Mountain Research Station, Proceedings RMRS-P-33. 2004.

**45. © Response of Douglas-fir seedlings to a brief pulse of <sup>15</sup>N-labeled nutrients.** Warren, C. R., Livingston, N. J., and Turpin, D. H. Tree Physiology 23 (17):1193-1200. 2003.

**46. Slow release fertilization reduces nitrate leaching in bareroot production of *Pinus strobus* seedlings.** Dobrahner, J. J., Kyer, J., and Vande Hey, J. IN: National

proceedings: Forest and Conservation Nursery Associations - 2003, p. 129-139. USDA Forest Service, Rocky Mountain Research Station, Proceedings RMRS-P-33. 2004.

**47. Sodium and plants: a bad combination.** Altland, J. Digger 48(2):24-26, 28. 2004.

**48. Subsurface banding of phosphorus, potassium, and controlled release nitrogen fertilizers in the 1+0 year at J. Herbert Stone Nursery.** Steinfeld, D. and Feigner, S. IN: National proceedings: Forest and Conservation Nursery Associations - 2003, p. 33-37. USDA Forest Service, Rocky Mountain Research Station, Proceedings RMRS-P-33. 2004.

**SO. Plant analysis handbook II: a practical sampling, preparation, analysis and interpretation guide.** Mills, H. A. and Jones, J. B., Jr. MicroMacro Publishing, Inc. 1996. ORDER FROM: MicroMacro Publishing, 183 Paradise Blvd, Suite 104, Athens, GA 30607. Phone 706-613-7813. Price \$79.95 + S&H.

## General and Miscellaneous



**49. Illinois Conservation Reserve Enhancement Program (CREP): a model for watershed restoration.** Bruce, D. IN: National proceedings: Forest and Conservation Nursery Associations - 2003, p. 95-99. USDA Forest Service, Rocky Mountain Research Station, Proceedings RMRS-P-33. 2004.

**50. Illinois Forestry Development Act of 1983 and the IDNR free seedling program.** Little, D. IN: National proceedings: Forest and Conservation Nursery Associations - 2003, p. 100-102. USDA Forest Service, Rocky Mountain Research Station, Proceedings RMRS-P-33. 2004.

**51. The nursery industry in the United States -- always new frontiers.** Green, J. L. and Green, A. K. HortScience 38(5):994-998. 2003.

**52. The Virginia commercial greenhouse industry -- current practices and future needs assessment.** Scoggins, H. L., Latimer, J. G., and Barden, V. T. HortTechnology 14(1):109-114. 2004.

**SO. National proceedings: Forest and Conservation Nursery Associations - 2003.** Riley, L. E., Dumroese, R. K., and Landis, T. D. USDA Forest Service, Rocky

Mountain Research Station, Proceedings RMRS-P-33. 2004. Includes papers from two conferences - Western and Northeastern. Each paper is entered separately. ORDER FROM: Publications Distribution, Rocky Mountain Research Station, 240 Prospect Road, Fort Collins, CO 80526. rschneider@fs.fed.us. Free.

## Genetics and Tree Improvement



**Genome**  
Aa  
Bb  
cc  
Dd

**53. Budbreak number in apple seedlings as selection criterion for improved adaptability to mild winter climates.** Labuschagne, I. F., Louw, J. H., Schmidt, K., and Sadie, A. HortScience 38(6):1186-1190. 2003.

**54. © Efficiency of seedlings and rooted cuttings for testing and selection in *Pinus taeda*.** Isik, F., Li, B., Frampton, J., and Goldfarb, B. Forest Science 50(1):44-53. 2004.

**55. © From genotype to phenotype: unraveling the complexities of cold adaptation in forest trees.** Howe, G. T., Aitken, S. N., Neale, D. B., Jermstad, K. D., Wheeler, N. C., and Chen, T. H. H. Canadian Journal of Botany 81(12):1247-1266. 2004.

**56. © Photosynthetic acclimation is reflected in specific patterns of gene expression in drought-stressed loblolly pine.** Watkinson, J. I., Sioson, A. A., Vasquez-Robinet, C., and Shukla, M. Plant Physiology 133(4):1702-1716. 2003.

**57. © Retrospective early test for adult vigor of *Pinus pinaster* families grown under two water regimes. Implications for early selection.** Harfouche, A. Annals of Forest Science 60(6):539-547. 2003.

**58. Structure of genetic variation and implications for the management of seed and planting stock.** St. Clair, B. and Johnson, R. IN: National proceedings: Forest and Conservation Nursery Associations - 2003, p. 64-71. USDA Forest Service, Rocky Mountain Research Station, Proceedings RMRS-P-33. 2004.

## Mycorrhizae & Beneficial Microorganisms



**59. Effects of vesicular-arbuscular mycorrhizae and seed source on nursery-grown black walnut seedlings.** Brookshire, B. L., Garrett, H. E., and Robison, T. L. IN: Proceedings, 13th Central Hardwood Forest conference, 2002, p. 468-475.. USDA Forest Service, North Central Research Station, General Technical Report NC-234. 2003.

**60. A symbiotic relationship: Ancient fossils in a Wisconsin cutbank shed light on a modern erosion control project.** Amaranthus, M. and Steinfeld, D. Erosion Control Sept/Oct 2003, p. 1-4. 2003.

## Nursery Structures & Equipment



**61. A germination room can give a better start for your plants.** Bartok, J. W., Jr. Greenhouse Production and Management 24(2):55-56. 2004.

**62. Improve your greenhouse controls.** Brugger, M. Greenhouse Management and Production 24(2):46-48. 2004. Better environmental controls can reduce operating costs and result in higher plant quality.

**63. Lighting up profits: Light transmission in greenhouse design and coverings.** Both, A. J. and Faust, J. E. Greenhouse Grower 21(14):82-86. 2003.

**64. Lighting up profits: materials and strategies for greenhouse shade.** Both, A. J. and Faust, J. E. Greenhouse Grower 22(1):132-136. 2004.

**65. Lighting up profits: photoperiod control.** Fisher, P. and Both, A. J. Greenhouse Grower 22(3):42-44, 46, 49. 2004.

**66. Lighting up profits: supplemental lighting technology and costs.** Fisher, P. and Both, A. J. Greenhouse Grower 22(2):86-88, 91-92, 94. 2004.

**67. Pile management no more: recycling those nursery plastics is easier than ever.** Miller, T. I. Digger 48(3):45-46, 48, 50, 52-53. 2004.

**68. Shady proposition.** Grabarek, B. American Nurseryman 199(3):42-45. 2004. Regardless of your budget, there is a greenhouse shading system to fit the needs of most growers.

**69. Ultimate Greenhouse Series: Dream design.** Rodda, K. Greenhouse Management and Production 24(1):19-24. 2004. From gutter connects to efficiency issues, growers outline the blueprints of their ultimate greenhouse.

**70. Ultimate Greenhouse Series: Structure.** Rodda, K. Greenhouse Management and Production 24(2):16-20. 2004. There is no such thing as over-engineering in greenhouse construction, especially of the "ultimate" variety.

**71. Ultimate Greenhouse Series: Under cover.** Rodda, K. Greenhouse Management and Production 24(3):20-23. 2004. Whether glass or plastic is your bag, light transmission and strength are key factors for glazing choices.

## Outplanting Performance



**72. Auger planting of oak seedlings in northern Arkansas.** Heitzman, E. and Grell, A. IN: Proceedings, 13th Central Hardwood Forest conference, 2002, p. 438-442. USDA Forest Service, North Central Research Station, General Technical Report NC-234. 2003.

**73. Comparison of site preparation methods and stock types for artificial regeneration of oaks in bottomlands.** Shaw, G. W., Dey, D. C., Kabrick, J., Grabner, J., and Muzika, R.-M. IN: Proceedings, 13th Central Hardwood Forest conference, 2002, p. 186-198. USDA Forest Service, North Central Research Station, General Technical Report NC-234. 2003.

**74. © Dominance of interplanted American chestnut (*Castanea dentata*) in southwestern Wisconsin, USA.** Jacobs, D. F. and Severeid, L. R. Forest Ecology and Management 191(1-3):111-120. 2004.

**75. © Effect of fertilization and irrigation on growth of aspen (*Populus tremuloides* Michx.) seedlings over**

three seasons. van den Driessche, R., Rude, W., and Martens, L. *Forest Ecology and Management* 186(1-3):381-389. 2003.

76. © **The effect of spacing rectangularity on stem quality in loblolly pine plantations.** Amateis, R. L., Radtke, P. J., and Hansen, G. D. *Canadian Journal of Forest Research* 34(2):498-501. 2004.

77. © **The effects of planting date and seedling quality on field performance of *Castanea sativa* Mill. and *Quercus frainetto* Ten. seedlings.** Radoglou, K., Raftoyannis, Y., and Halivopoulos, G. *Forestry* 76(5):569-578. 2003.

78. © **Emergence and survival of *Populus tremula* seedlings under varying moisture conditions.** Latva-Karjanmaa, T., Suvanto, L., Leinonen, K., and Rita, H. *Canadian Journal of Forest Research* 33(11):2081-2088. 2003.

79. © **Growth, damage and net nitrogen uptake in *Picea abies* (L.) Karst. seedlings, effects of site preparation and fertilisation.** Nordborg, F. and Nilsson, U. *Annals of Forest Science* 60(7):657-666. 2004.

80. © **Interaction of initial seedling diameter, fertilization and weed control on Douglas-fir growth over the first four years after planting.** Rose, R. and Ketchum, J. S. *Annals of Forest Science* 60(7):625-635. 2004.

81. © **Performance and physiology of large containerized and bare-root spruce seedlings in relation to scarification and competition in Quebec (Canada).** Thiffault, N., Jobidon, R., and Munson, A. D. *Annals of Forest Science* 60(7):645-655. 2004.

82. **Restoration of a Rocky Mountain spruce-fir forest: sixth-year Engelmann spruce seedling response with or without tree shelter removal.** Jacobs, D. F. IN: National proceedings: Forest and Conservation Nursery Associations - 2003, p. 57-63. USDA Forest Service, Rocky Mountain Research Station, Proceedings RMRS-P-33. 2004.

83. © **Root system modifications by nursery culture reflect on post-planting growth and development of coniferous seedlings.** Krasowski, M. J. *Forestry Chronicle* 79(5):882-891. 2003.

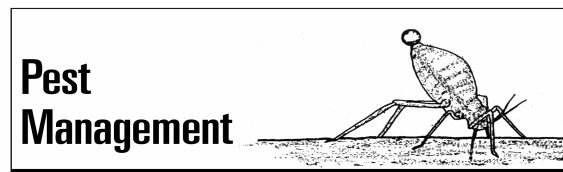
84. © **Soil seed banks and the potential restoration of forested wetlands after farming.** Middleton, B. A. *Journal of Applied Ecology* 40(6):1025-1034. 2003.

85. **Success of hardwood tree plantations in Indiana and implications for nursery managers.** Davis, A. S., Jacobs, D. F., and Ross-Davis, A. IN: National proceedings: Forest and Conservation Nursery Associations - 2003, p. 107-110. USDA Forest Service, Rocky Mountain Research Station, Proceedings RMRS-P-33. 2004.

86. **Survival results of a biomass planting in the Missouri River floodplain.** Walter, W. D. and Dwyer, J. P. IN: Proceedings, 13th Central Hardwood Forest conference, 2002, p. 177-185. USDA Forest Service, North Central Research Station, General Technical Report NC-234. 2003.

87. **Transplanting sugar maple and northern red oak in early fall vs. late fall or spring results in earlier first-season root growth.** Harris, J. R. and Fanelli, J. *Acta Horticulturae* 618:131-135. 2003.

88. © **Utilizing pioneer species as a hydrological nurse crop to lower water table for reforestation of poorly drained boreal sites.** Landhausser, S. M., Lieffers, V. J., and Silins, U. *Annals of Forest Science* 60(7):741-748. 2004.



89. © **Conidial dispersal of *Gremmeniella abietina*: climatic and microclimatic factors.** Petaisto, R.-L. and Heinonen, J. *Forest Pathology* 33(6):363-373. 2003.

90. © **Effect of moisture on thermal inactivation of soilborne pathogens under structural solarization.** Shlevin, E., Mahrer, Y., and Katan, J. *Phytopathology* 94(2):132-137. 2004.

91. © **Effects of field vegetation control on pine weevil (*Hylobius abietis*) damage to newly planted Norway spruce seedlings.** Orlander, G. and Nordlander, G. *Annals of Forest Science* 60(7):667-671. 2004.

92. **High-tech device detects weevils in nursery crops.** Elstein, D. *Agricultural Research* 52(4):8. 2004.

93. © **Identifying microorganisms which fill a niche similar to that of the pathogen: a new investigative approach for discovering biological control organisms.** Yin, B., Scupham, A. J., Menge, J. A., and Borneman, J. *Plant and Soil* 259(1-2):19-27. 2004.

**94. © Modeling the survival of two soilborne pathogens under dry structural solarization.** Shlevin, E., Saguy, I. S., Mahrer, Y., and Katan, J. *Phytopathology* 93(10):1247-1257. 2003.

**95. The people factor.** Schneider, J. *Greenhouse Management and Production* 24(2):29-31. 2004. The first defense to keep unwanted insects and diseases out of the greenhouse is good personal hygiene.

**96. *Phytophthora ramorum*: a plant pathologist's perspective.** Parke, J. L. *Digger* 48(5):36-38, 40-42. 2004.

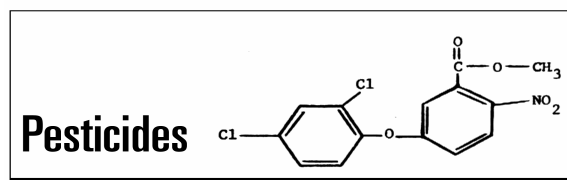
**97. Should you rotate fungicides?** Chase, A. R. *Greenhouse Management and Production* 24(2):34-37. 2004.

**98. Slimy friends and foes.** Sibley, J. L. and Thompson, J. M. *American Nurseryman* 199(3):25-26, 28. 2004. Due to their importance to the ecosystem and, in particular, a plant's growth, understanding slugs and snails is essential.

**99. Slug fest: Knowledge can give you the one-two punch needed to control these slimy and spineless creatures with voracious appetites.** Rosetta, R. *Digger* 48(2):57-61. 2004.

**100. Stopping weevil deeds.** Bruck, D. *American Nurseryman* 199(6):43-44, 46-50. 2004. Understand black vine weevil's biology in container nurseries, and cultural, chemical and biological control methods.

**101. Why fungicides "fail".** Chatfield, J. *American Nurseryman* 199(2):22-24, 26-27. 2004.



**102. Common and chemical names of herbicides approved by the Weed Science Society of America.** *Weed Science* 51(6):1022-1028. 2003.

**103. Mixing it up.** Cloyd, R. A. *American Nurseryman* 199(7):48-50, 52. 2004. Successfully managing insect and mite problems in the greenhouse requires growers to understand and address issues involving tank mixes and new pesticides.

**104. New insect and mite products.** Gilrein, D. *Greenhouse Management and Production* 24(1):84-86. 2004.

**105. Status of pesticide registrations for forestry.** Taylor, J. W., Jr. IN: National proceedings: Forest and Conservation Nursery Associations - 2003, p. 85-86. USDA Forest Service, Rocky Mountain Research Station, Proceedings RMRS-P-33. 2004.

**106. Water quality plays key role in pesticide success.** Altland, J. *Digger* 48(6):37-43. 2004.

**107. What you should know about chloronicotinyl insecticides.** Cloyd, R. *Greenhouse Management and Production* 24(3):60. 2004.



**108. Container handling and storage in eastern Canada.** White, B. IN: National proceedings: Forest and Conservation Nursery Associations - 2003, p. 10-14. USDA Forest Service, Rocky Mountain Research Station, Proceedings RMRS-P-33. 2004. Sowing, culturing, and overwintering methods of the 3 largest forest nurseries in Atlantic Canada are discussed.

**109. Container seedling handling and storage in the southeastern states.** Dumroese, R. K. and Barnett, J. P. IN: National proceedings: Forest and Conservation Nursery Associations - 2003, p. 22-25. USDA Forest Service, Rocky Mountain Research Station, Proceedings RMRS-P-33. 2004.

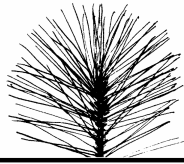
**110. Container seedling storage and handling in the Pacific Northwest: answers to some frequently asked questions.** Ritchie, G. A. IN: National proceedings: Forest and Conservation Nursery Associations - 2003, p. 3-7. USDA Forest Service, Rocky Mountain Research Station, Proceedings RMRS-P-33. 2004.

**111. Effect of physiological status on the cold storage tolerance and field performance of ash, oak and sycamore in Ireland.** O'Reilly, C., Mortazavi, M., and Keane, M. *Phyton* 43(2):335-350. 2003.

**112. Seedling storage and handling in western Canada.** Kooistra, C. M. IN: National proceedings:

Forest and Conservation Nursery Associations - 2003, p. 15-21. USDA Forest Service, Rocky Mountain Research Station, Proceedings RMRS-P-33. 2004.

## Seedling Physiology and Morphology



### 113. Between and within genera comparisons of morphological plasticity for *Betula* and *Acer* seedlings grown under varying light conditions.

Ellum, D. S., Ashton, P. M. S., and Berlyn, G. P. IN: Proceedings of the New England Society of American Foresters 84th Winter Meeting, p. 33-36. USDA Forest Service, Northeastern Forest Research Station, General Technical Report NE-314. 2003.

114. Carbon isotopic composition and seedling growth of *Pinus greggii* Engelm. under nursery conditions. Garcia-Garcia, R., Gomez-Guerrero, A., Lopez-Upton, J., and Vargas-Hernandez, J. J. *Agrociencia* 37(5):467-475. 2003.

115. The effect of polystimulin-A6 on some morphological properties of beech seedlings (*Fagus orientalis* L.). Kirdar, E. and Allahverdiev, S. *Acta Agric. Scand. Sect. B, Soil and Plant Sci.* 53(4):200-207. 2003.

116. Hardening of *Olea europaea* var. *sylvestris* seedlings by application of water and humidity ambient stress treatments. Banon, S., Ochoa, J., Franco, J. A., Sanchez-Blanco, M. J., Alarcon, J. J., Torrecillas, A., and Ferrandez, T. *Acta Horticulturae* 614:515-520. 2003.

117. © The impact of material used for minirhizotron tubes for root research. Withington, J. M., Elkin, A. D., Bulaj, B., and Olesinski, J. *New Phytologist* 160(3):533-544. 2003.

118. Late-season flooding regimes influence the accretion and partitioning of nitrogen and biomass in silver maple seedlings. Kaelke, C. M. and Dawson, J. O. IN: Proceedings, 13th Central Hardwood Forest conference, 2002, p. 167-176. USDA Forest Service, North Central Research Station, General Technical Report NC-234. 2003.

119. © Plant adaptations to overwintering stresses and implications of climate change. Bertrand, A. and

Castonguay, Y. *Canadian Journal of Botany* 81(12):1145-1152. 2003.

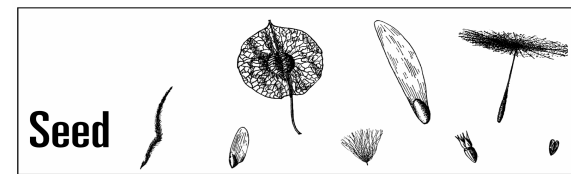
120. Recent trends in hardwood seedling quality assessment. Jacobs, D. F., Wilson, B. C., and Davis, A. S. IN: National proceedings: Forest and Conservation Nursery Associations - 2003, p. 140-144. USDA Forest Service, Rocky Mountain Research Station, Proceedings RMRS-P-33. 2004.

121. © Responses to drought preconditioning in *Eucalyptus globulus* Labill. provenances. Guarnaschelli, A. B., Lemcoff, J. H., Prystupa, P., and Basci, S. O. *Trees: Structure and Function* 17(6):501-509. 2003.

122. © Seasonal differences in plant responses to flooding and anoxia. Crawford, R. M. M. *Canadian Journal of Botany* 81(12):1224-1246. 2003.

123. A simple method to estimate radiation interception by nursery stock conifers: a case study of eastern white cedar. Pronk, A. A., Goudriaan, J., Stilma, E., and Challa, H. *NJAS: Wageningen Journal of Life Sciences* 51(3):279-295. 2003.

124. Using electrolyte leakage for evaluating hardwood seedling cold hardiness. Wilson, B. C. and Jacobs, D. F. IN: National proceedings: Forest and Conservation Nursery Associations - 2003, p. 125-128. USDA Forest Service, Rocky Mountain Research Station, Proceedings RMRS-P-33. 2004.



125. Cold stratification of Pacific madrone seeds. Harrington, C. A. and Kraft, J. M. *Native Plants Journal* 5(1):66-74. 2004.

126. © Dormancy termination of western white pine (*Pinus monticola* Dougl. Ex D. Don) seeds is associated with changes in abscisic acid metabolism. Feurtado, J. A., Ambrose, S. J., Cutler, A. J., Ross, A. R. S., Abrams, S. R., and Kermode, A. R. *Planta* 218(4):630-639. 2004.

127. © Effect of seed maturity and pretreatment on dormancy and germination of *Sorbus mougeotii* seeds. Jensen, M. *Scandinavian Journal of Forest Research* 18(6):479-486. 2003.



**128. © Effects of hot water treatment, biocontrol agents, disinfectants and a fungicide on storability of English oak acorns and control of the pathogen, *Ciboria batschiana*.** Knudsen, I. M. B., Thomsen, K. A., Jensen, B., and Poulsen, K. M. *Forest Pathology* 34 (1):47-64. 2004.

**129. © Freezing tolerance of conifer seeds and germinants.** Hawkins, B. J., Guest, H. J., and Kolotelo, D. *Tree Physiology* 23(18):1237-1246. 2003.

**130. How acorn size influences seedling size and possible seed management choices.** Karrfalt, R. P. IN: National proceedings: Forest and Conservation Nursery Associations - 2003, p. 117-118. USDA Forest Service, Rocky Mountain Research Station, Proceedings RMRS-P-33. 2004.

**131. © Involvement of acetaldehyde in seed deterioration of some recalcitrant woody species through the acceleration of aerobic respiration.** Akimoto, T., Cho, S., Yoshida, H., Furuta, H., and Esashi, Y. *Plant and Cell Physiology* 45(2):201-210. 2004.

**132. Micro-fibre pollination bags and high viability *Pinus patula* pollen enhance cone survival and seed set during controlled pollination.** Nel, A. and van Staden, J. *South African Journal of Botany* 69(4):469-475. 2003.

**133. Panel discussion: goals in supplying tree seed.** Lovelace, R. and Lovelace, J. IN: National proceedings: Forest and Conservation Nursery Associations - 2003, p. 119. USDA Forest Service, Rocky Mountain Research Station, Proceedings RMRS-P-33. 2004.

**134. Panel discussion: seed supply issues for *Vallonia* Nursery.** Hawkins, R. and O'Connor, P. IN: National proceedings: Forest and Conservation Nursery Associations - 2003, p. 121-124. USDA Forest Service, Rocky Mountain Research Station, Proceedings RMRS-P-33. 2004.

**135. Panel discussion: tree seed collection and direct seeding in Illinois.** Ward, T. IN: National proceedings: Forest and Conservation Nursery Associations - 2003, p. 120. USDA Forest Service, Rocky Mountain Research Station, Proceedings RMRS-P-33. 2004.

**136. A review of chemical treatments to improve germination of longleaf pine seeds.** Barnett, J. P. and Varela, S. *Native Plants Journal* 5(1):18-24. 2004.

**137. Study of some characteristics of cones and seeds of *Abies religiosa* (HBK) Sch. et Cham.** Nieto de Pascual-Pola, C., Musalem, M. A., and Ortega-Alcala, J. *Agrociencia* 38(5):521-531. 2003.

**138. Update on oak seed quality research: hardwood recalcitrant seeds.** Connor, K. F. IN: National proceedings: Forest and Conservation Nursery Associations - 2003, p. 111-116. USDA Forest Service, Rocky Mountain Research Station, Proceedings RMRS-P-33. 2004.



**139. The compaction problem.** Newby, A. and Altland, J. *American Nurseryman* 199(5):36-38. 2004.

**140. A place to stand and a place to grow.** Mathers, H. *American Nurseryman* 199(6):26-31. 2004. In container production, the choice and maintenance of container media is of primary importance.

**141. Soil and water management plans for bareroot nurseries.** Boyer, D. IN: National proceedings: Forest and Conservation Nursery Associations - 2003, p. 30-32. USDA Forest Service, Rocky Mountain Research Station, Proceedings RMRS-P-33. 2004.

**142. Timing is everything: test field soils correctly to manage your pH.** Altland, J. *Digger* 48(5):43-49. 2004.

**143. Using polyacrylamide to control erosion on agricultural and disturbed soils in rainfed areas.** Flanagan, D. C., Norton, L. D., Peterson, J. R., and Chaudhari, K. *Journal of Soil and Water Conservation* 58(5):301-311. 2003.

**144. © A variable-volume TDR probe for measuring water content in large soil volumes.** Souza, C. F. and Matsura, E. E. *Soil Science Society of America Journal* 68(1):25-31. 2004.

## Tropical Forestry & Agroforestry



**145. © Amelioration of degraded sodic soil by afforestation.** Mishra, A., Sharma, S. D., and Pandey, R. *Arid Land Research and Management* 18(1):13-23. 2004.

**146. © Big-leaf mahogany (*Swietenia macrophylla*) seedling survival and growth across a topographic gradient in southeast Para, Brazil.** Grogan, J., Ashton, M. S., and Galvao, J. *Forest Ecology and Management* 186(1-3):311-326. 2003.

**147. © Biomass partitioning and gas exchange in *Dalbergia sissoo* seedlings under water stress.** Singh, B. and Singh, G. *Photosynthetica* 41(3):407-414. 2003.

**148. Clonal propagation of teak (*Tectona grandis* Linn. f.): effect of IBA application and adventitious root regeneration on vertically split cuttings.** Husen, A. and Pal, M. *Silvae Genetica* 52(3-4):173-176. 2003.

**149. © Evaluation of alternative approaches to rainforest restoration on abandoned pasturelands in tropical north Queensland, Australia.** Florentine, S. K. and Westbrooke, M. E. *Land Degradation & Development* 15(1):1-13. 2004.

**150. © Influence of nutrient application rate on growth and rooting potential of the West African hardwood *Triplochiton scleroxylon*.** Dick, J. M., Leakey, R. R. B., McBeath, C., Harvey, F., Smith, R. I., and Woods, C. *Tree Physiology* 24(1):35-44. 2004.

**151. © Influences of salinity and shade on seedling photosynthesis and growth of two mangrove species, *Rhizophora mangle* and *Bruguiera sexangula*, introduced to Hawaii.** Krauss, K. W. and Allen, J. A. *Aquatic Botany* 77(4):311-324. 2003.

**152. Management studies on root rot of *Prosopis cineraria* caused by *Fusarium solani*.** Sharma, S., Pal, R., Gupta, P. P., and Kaushik, J. C. *Journal of Tropical Forest Science* 16(1):71-77. 2004.

**153. © Phosphorus limitation on nitrogen fixation by *Facaltaria* seedlings.** Binkley, D., Senock, R., and Cromack, K., Jr. *Forest Ecology and Management* 186(1-3):171-176. 2003.

**154. Plantation conifers in the tropics.** Evans, J. *Acta Horticulturae* 615:355-359. 2003.

**155. © Responses of coffee seedlings to calcium and zinc amendments to two Hawaiian acid soils.** Hue, N. V. *Journal of Plant Nutrition* 27(2):261-274. 2004.

## Vegetative Propagation and Tissue Culture



**156. © Branch propagation, not cladogenesis, permits dispersive, clonal reproduction of riparian cottonwoods.** Rood, S. B., Kalischuk, A. R., Polzin, M. L., and Braatne, J. H. *Forest Ecology and Management* 186(1-3):227-242. 2003.

**157. Considerations for collecting and vegetatively propagating poplar woody plant materials.** Wearstler, K., Jr. IN: National proceedings: Forest and Conservation Nursery Associations - 2003, p. 55-56. USDA Forest Service, Rocky Mountain Research Station, Proceedings RMRS-P-33. 2004.

**158. Potential use of containerised willow transplants in the Falkland Islands** Olave, R. J., McAdam, J. H., Dawson, W. M., Kerr, A., and Lennie, G. J. IN: National proceedings: Forest and Conservation Nursery Associations - 2003, p. 87-91. USDA Forest Service, Rocky Mountain Research Station, Proceedings RMRS-P-33. 2004.

**159. The root of propagation.** Blythe, G. and Sibley, J. L. *American Nurseryman* 199(1):32-34, 36. 2004. Foliar spray application and substrate application of auxin may provide alternative methods when vegetatively propagating certain nursery crops.

## Water Management



**160. Alkalinity calculator.** Whipker, B. E. and Krug, B. A. *Greenhouse Management and Production* 24(3):41-45. 2004. Calculate acid addition rates with North Carolina State University's Alkalinity Calculator.

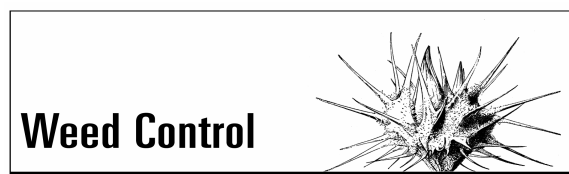
**161. How to develop the best irrigation system for you.** Bartok, J. W., Jr. Greenhouse Management and Production 24(3):61-63. 2004.

**162. Incorporating economics into the phosphorus index: an application to U.S. watersheds.** Johansson, R. C. and Randall, J. R. Journal of Soil and Water Conservation 58(5):224-231. 2003.

**163. Pesticide runoff and mitigation at a commercial nursery sites.** Kabashima, J. N., Less, S. J., Haver, D. L., Goh, K. S., Wu, L. S., and Gan, J. Pesticide Decontamination and Detoxification 863:213-230. 2004.

**164. Recycling your irrigation water to save costs.** Newman, J. Greenhouse Management and Production 24(2):49-51. 2004.

**165. Which irrigation system works best for you: an in-depth look at 3 automated systems.** Bachman, G. R. Greenhouse Management and Production 24(3):35-38, 40. 2004.



**166. Get control of summer annual weeds in field nurseries.** Altland, J. Digger 48(4):48-50, 52, 54-56. 2004.

**167. © Growth, survival and physiological effects of hexazinone and sulfometuron methyl applied ovetop of longleaf pine seedlings.** Ramsey, C. L. and Jose, S. Southern Journal of Applied Forestry 28(1):48-54. 2004.

**168. Herbicidal tendencies.** McDonald, E. American Nurseryman 199(2):35-36, 38. 2004. When unwanted plants have taken over a crop, using a herbicide may sound like the ideal solution. But weed control is rarely achieved in just one spray.

**169. Hexazinone and simazine dissipation in forestry field nurseries.** Calderon, M. J., Ortega, M., Hermosin, M. C., Garcia-Baudin, J., and Cornejo, J. Chemosphere 54(1):1-8. 2004.

**170. Kudzu (*Pueraria montana*) community responses to herbicides, burning, and high-density loblolly pine.** Harrington, T. B., Rader-Dixon, L., and Taylor, J. W., Jr. Weed Science 51(6):965-974. 2003.

**171. A weedy situation.** Ahrens, J. F. American Nurseryman 199(12):51-54, 56-57. 2004.

# Literature Order Form

## Summer 2004

Please fill out a separate order form for each person ordering literature. Write in the number or letter of the articles in which you are interested in the spaces at the bottom of this page. Note that we will only provide free copies of the first 25! For items that require a copyright fee, you will receive the title page with abstract and ordering instructions if you want the entire article. Fax or mail this form to:

Forest Nursery Notes  
J.H. Stone Nursery  
2606 Old Stage Rd.  
Central Point, OR 97502  
TEL: 541.858.6166  
FAX: 541.858.6110  
E-mail: rewatson@fs.fed.us

<b>Name:</b>	<b>Position:</b>
<b>Department:</b>	<b>Nursery/Company:</b>
<b>Mailing address:</b>	
<b>Street Address:</b>	
<b>City:</b>	<b>State/Province:</b>
<b>Country:</b>	<b>Zip/Postal Code:</b>
<b>Telephone:</b>	<b>FAX:</b>
<b>E-mail:</b>	<b>Website:</b>

In order to keep costs reasonable we will provide free copies of the first 25 articles. Fill in the number or letter each article from the New Nursery Literature section in the following spaces:

-----  
-----  
-----